

3RD ANGLE PROJECTION
DO NOT SCALE

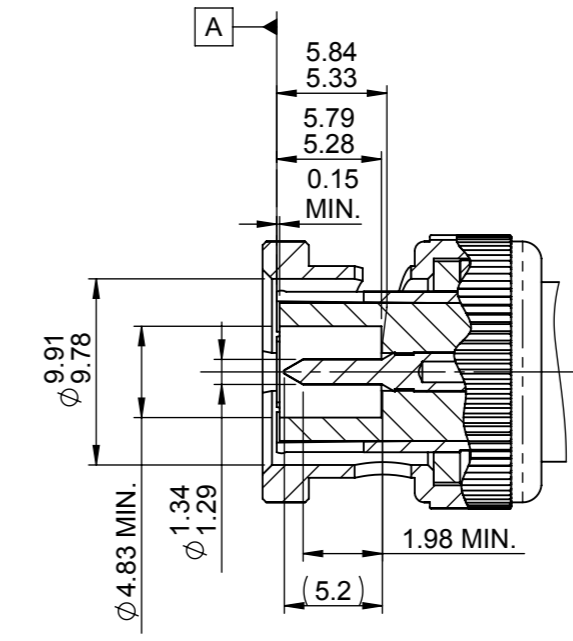
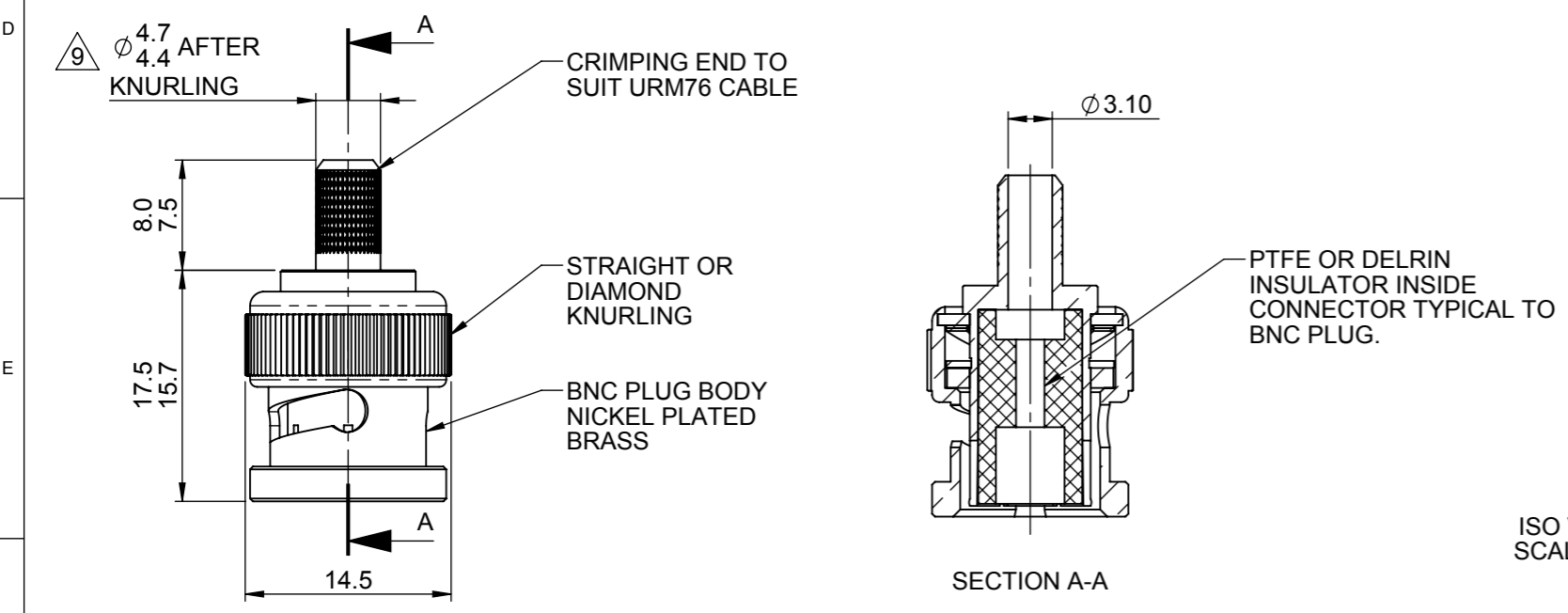
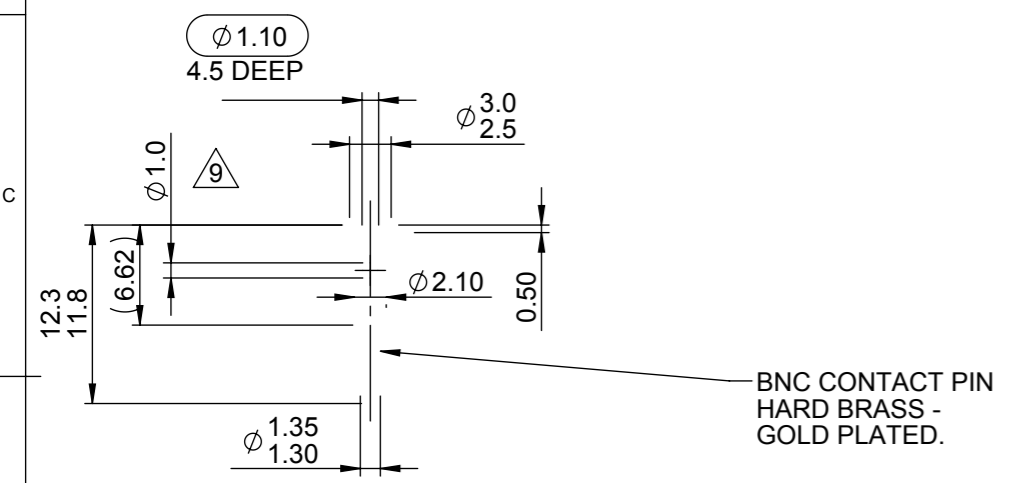
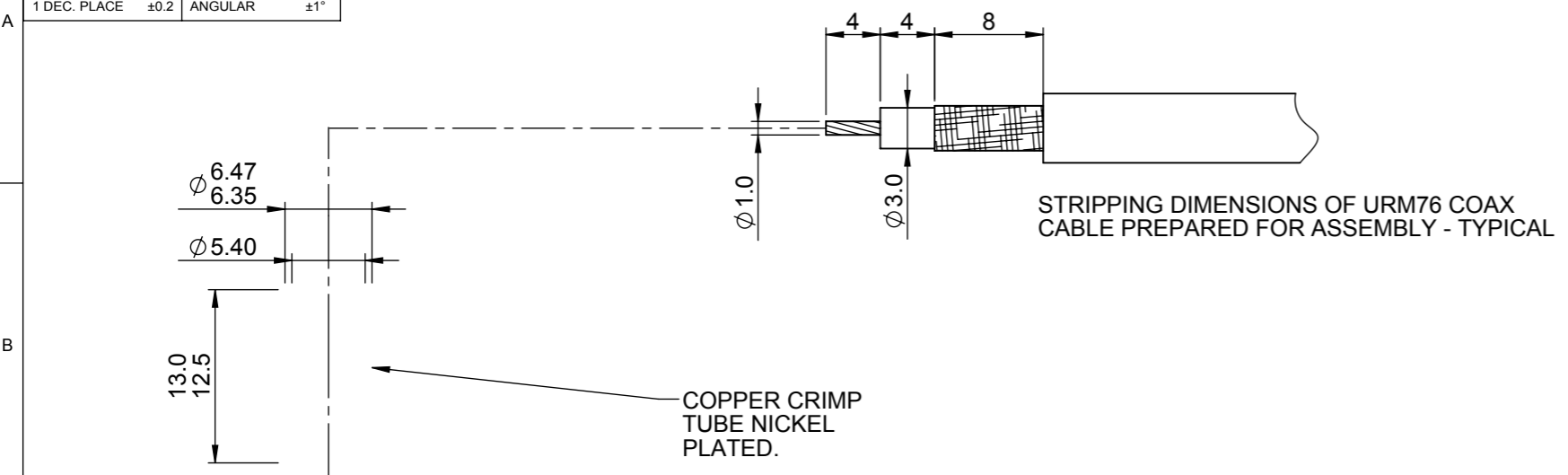
DENOTES LATEST ISSUE CHANGES

DENOTES CRITICAL VALUE

© 2014 A3 THIS DOCUMENT MUST NOT BE COPIED OR DISCLOSED TO A THIRD PARTY WITHOUT THE WRITTEN CONSENT OF PANORAMA ANTENNAS LTD.

TOLERANCES UNLESS OTHERWISE STATED	
0 DEC. PLACE ±0.5	2 DEC. PLACES ±0.1
1 DEC. PLACE ±0.2	ANGULAR ±1°

DWG. No. SC1-BNC-PC10



CONNECTOR ASSEMBLY MUST CONFORM TO THESE STANDARD INTERFACE DIMENSIONS.

- NOTES:
1. IMPEDANCE: 50Ω
 2. CONTACT PIN MUST REMAIN CAPTIVE AFTER ASSEMBLY OF CONNECTOR.
 3. PLUGS TO BE INDIVIDUALLY PACKED.
 4. FINAL CONNECTOR ASSEMBLY MUST CONFORM TO STANDARD INTERFACE DIMENSIONS SHOWN.
 5. SAMPLES MUST BE APPROVED BY PANORAMA ANTENNAS Q.C. BEFORE COMMENCING PRODUCTION.
 6. ALL THREADS TO BE FREE FROM RESTRICTION ALONG ENTIRE LENGTH AFTER PLATING.
 7. ALL DIMENSIONS APPLY AFTER PLATING.
 8. ALL MATERIALS USED MUST BE RoHS COMPLIANT.

01019	9	REDRAWN IN 2D AND 3D CAD INTERFACE DIMENSIONS CORRECTED. NOTES AND PIN DIMENSION UPDATED.	13/01/2013	ATB
PCN	REV.	DESCRIPTION OF CHANGE	DATE	DRAWN
REVISIONS				

PRODUCT/ASSEMBLY CONNECTORS		DESCRIPTION BNC CRIMP PLUG FOR RG174 COAX CABLE			
MATERIAL N/A		APPROVED KD	D.O. CHECK PE	SCALE 2:1	DIMENSIONS IN mm
FINISH N/A					
WEIGHT 7.6g	SHEET 1 OF 1				