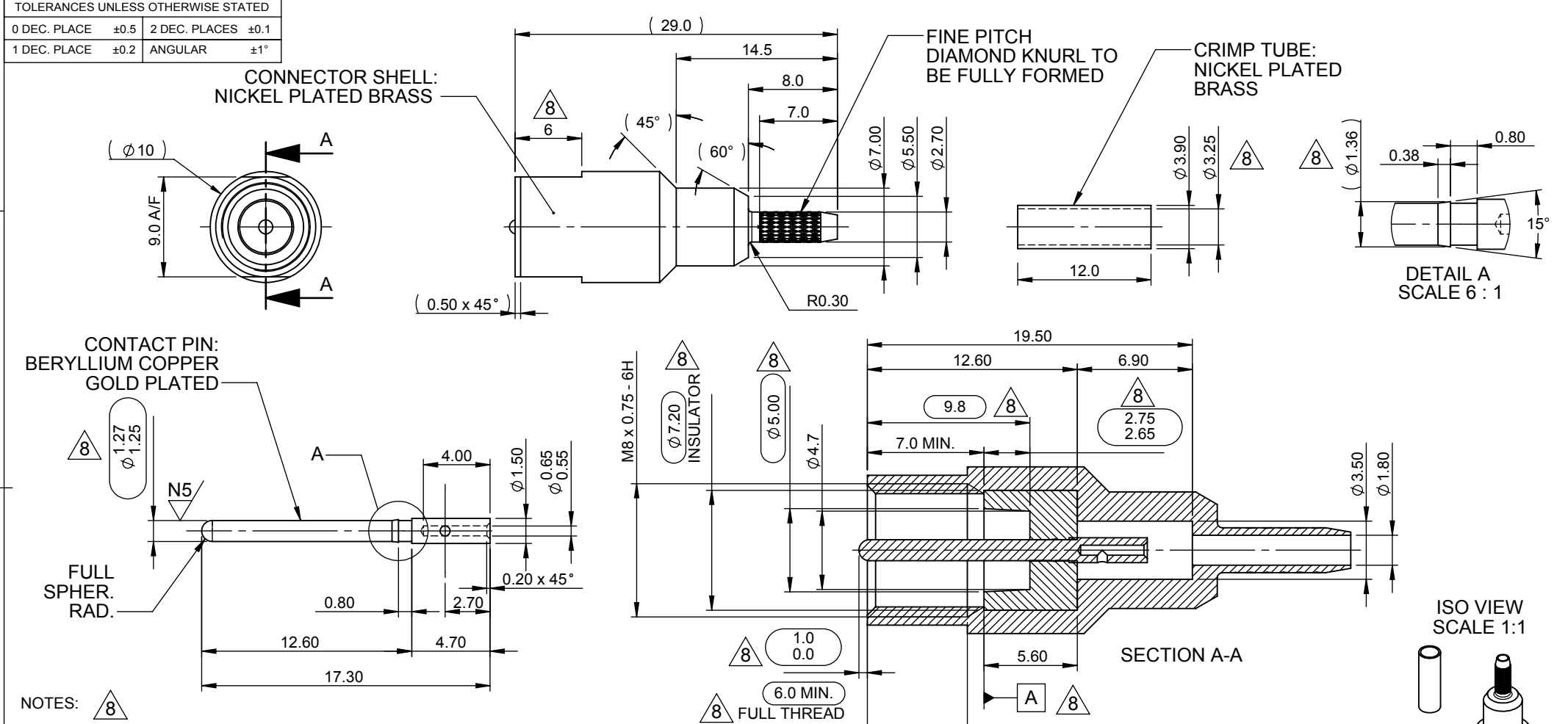


A

B

C

D



- NOTES:
- CONTACT PIN MUST REMAIN CAPTIVE AFTER ASSEMBLY OF CONNECTOR.
  - FINAL CONNECTOR ASSEMBLY MUST CONFORM TO STANDARD INTERFACE DIMENSIONS SHOWN.
  - SAMPLES MUST BE APPROVED BY PANORAMA ANTENNAS Q.C. BEFORE COMMENCING PRODUCTION.
  - ALL THREADS TO BE FREE FROM RESTRICTION ALONG ENTIRE LENGTH AFTER PLATING.
  - ALL DIMENSIONS APPLY AFTER PLATING.
  - ALL MATERIALS USED MUST BE RoHS COMPLIANT.

01019	8	REDRAWN IN 2D AND 3D. CRIMP DIMENSION UPDATED. NOTES, CRITICAL DIMS. AND TOLERANCES UPDATED.	22/11/2012	PE
PCN	REV.	DESCRIPTION OF CHANGE	DATE	DRAWN
REVISIONS				

PRODUCT/ASSEMBLY <b>CONNECTORS</b>		DESCRIPTION <b>FME STRAIGHT CRIMP PLUG FOR RG 174 / U COAX</b>		
MATERIAL <b>SEE DRAWING</b>		APPROVED KD	DO.CHECK KD	SCALE 3:1
FINISH <b>SEE DRAWING</b>		DIMENSIONS IN mm		
WEIGHT 7.3g	SHEET 1 OF 1			

