

DRG. No. SC1-N-JC10

©2011 A4

THIS DOCUMENT MUST NOT BE COPIED OR DISCLOSED TO A THIRD PARTY WITHOUT THE WRITTEN CONSENT OF PANORAMA ANTENNAS LTD.

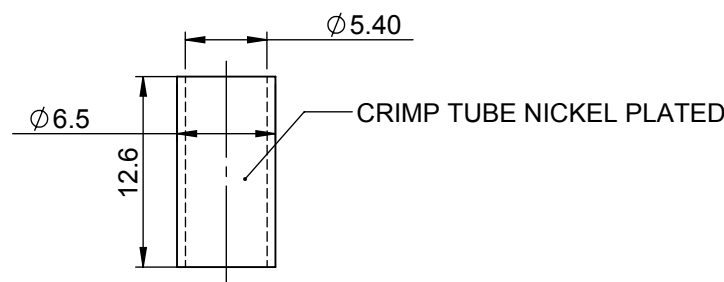
DO NOT SCALE

△ DENOTES LATEST ISSUE CHANGES

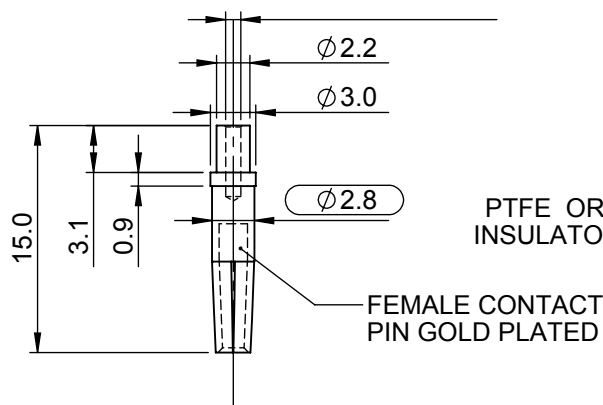
○ DENOTES INSPECTION VALUE

PROJECTION

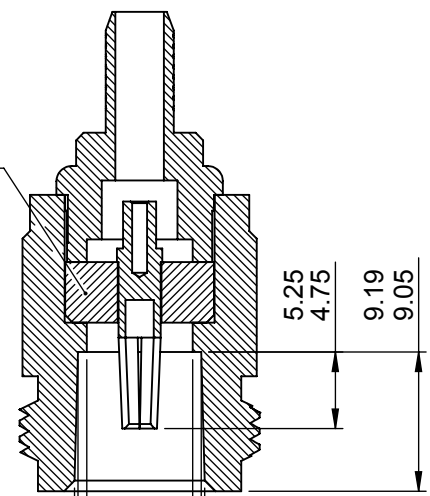
TOLERANCES UNLESS OTHERWISE STATED			
0 DEC. PLACE	±0.5	2 DEC. PLACES	±0.1
1 DEC. PLACE	±0.2	ANGULAR	±1°



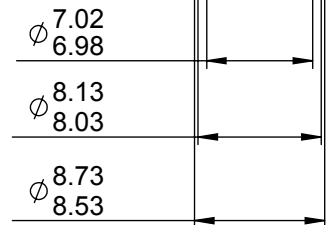
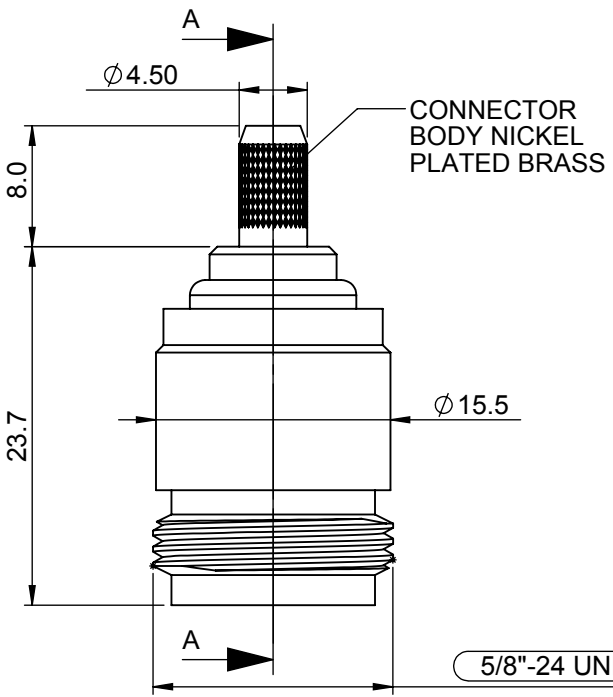
HOLE ϕ 1.1
1.0
5.0 DEEP



PTFE OR TEFLON INSULATOR-WHITE

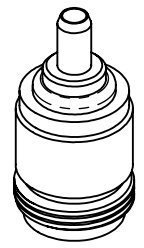


CONNECTOR ASSEMBLY MUST CONFORM TO THESE STANDARD INTERFACE DIMENSIONS.



SECTION A-A

ISOMETRIC VIEW



5/8"-24 UNEF (2A) THREAD

NOTES:

1. IMPEDENCE: 50 Ω
2. ALL MATERIALS USED MUST BE RoHS COMPLIANT.
3. SAMPLES MUST BE APPROVED BY PANORAMA ANTENNAS Q.C. BEFORE COMMENCING PRODUCTION.

PRODUCT/ASSEMBLY CONNECTORS		DESCRIPTION 'N' CRIMP SOCKET FOR RG58/URM76 COAX CABLE			
MATERIAL SEE NOTES		APPROVED KD	D.O.CHECK RF	SCALE 2:1	DIMENSIONS IN mm
FINISH SEE NOTES		PANORAMA ANTENNAS			
PCN	REV				
REVISIONS		WEIGHT 0.64 g	SHEET 1 OF 1		

A
B
C
D
E

F