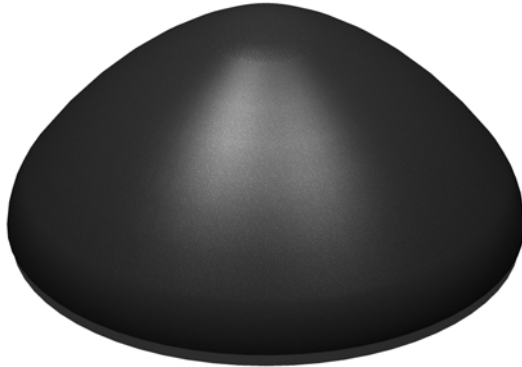


900MHz + 1800MHz + 3G & GPS Low Profile Antenna



Electrical Data

Frequency Range (MHz)		890 - 960 1710 - 1880, 1900 - 2170
Operational Bands		GSM900, GSM1800, 3G UMTS
VSWR		< 2:1
Gain: Isotropic	GSM900	2dBi
	GSM1800	2dBi
	3G UMTS	2dBi
Compared with ¼ wave	GSM900	0dB
	GSM1800	0dB
	3G UMTS	0dB
Polarisation		Vertical

GPS Data

Frequency Range (MHz)	1575
VSWR	<2.0:1 ± 4MHz
Gain: LNA	26dBi
Polarisation	Right Hand Circular
Operating Voltage	+3 - 7V DC (fed Via Coax)
Current	Typical 14mA

Mechanical Data

Base Dimensions (mm)	Height	50
	Diameter	102
Weight (g)		
Operating Temp (°C)		-40° / +80°C
Material		Engineering Plastic
Colour		Black

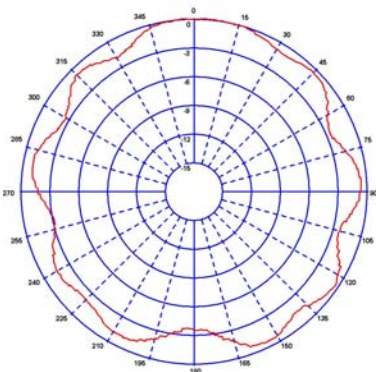
Mounting Data

Fixing	Panel Mount	
Mounting Hole Size (mm)	Length	17
	Diameter	18

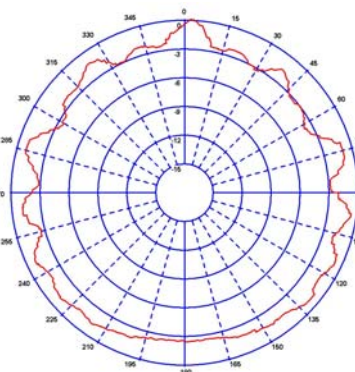
Cable Data

Cable Type		Coaxial Cable
Cable Length (mm)	GPS	300
	Cellular	300
Cable Thickness (mm)	GPS	2.5
	Cellular	3.5
Termination	GPS	FME Socket
	Cellular	FME Plug

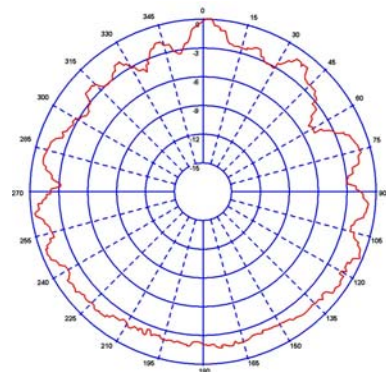
900 MHz



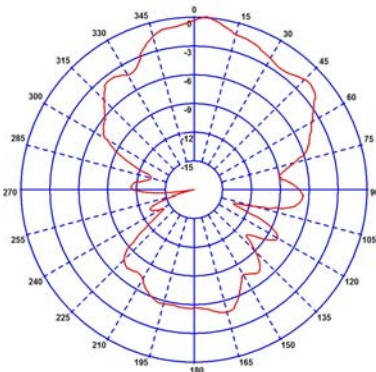
1800 MHz



3G



GPS



VSWR v Freq (MHz)

