

TRNC[G]-7-60

Standard four hole rail fixing

Wideband LTE/Celular/WIFI element

Optional Integrated GPS / GNSS / antenna [TRNCG version]

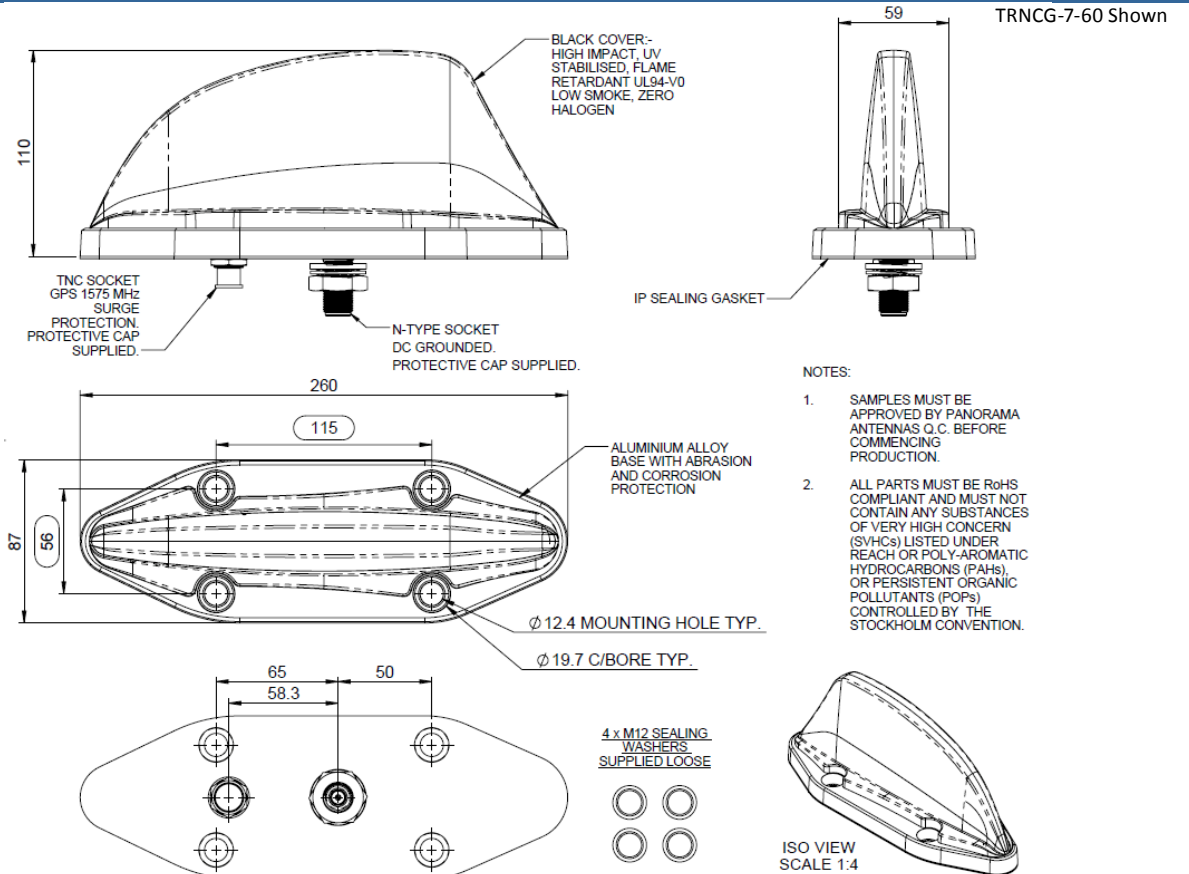


The TRNC(G) antenna series has been designed specifically for use on trains, trams and buses underground or over ground.

The TRNC(G)-7-60 range covers 698-960/1710-6000MHz with optional GPS/GNSS with a 26dB LNA. The radiating element is DC grounded and, in versions with a GPS module it is protected by a gas discharge surge arrester.

Housed in a high impact, flame retardant Ultem housing, the TRNC(G) series is weatherproof ensuring that the antenna's performance is never compromised.

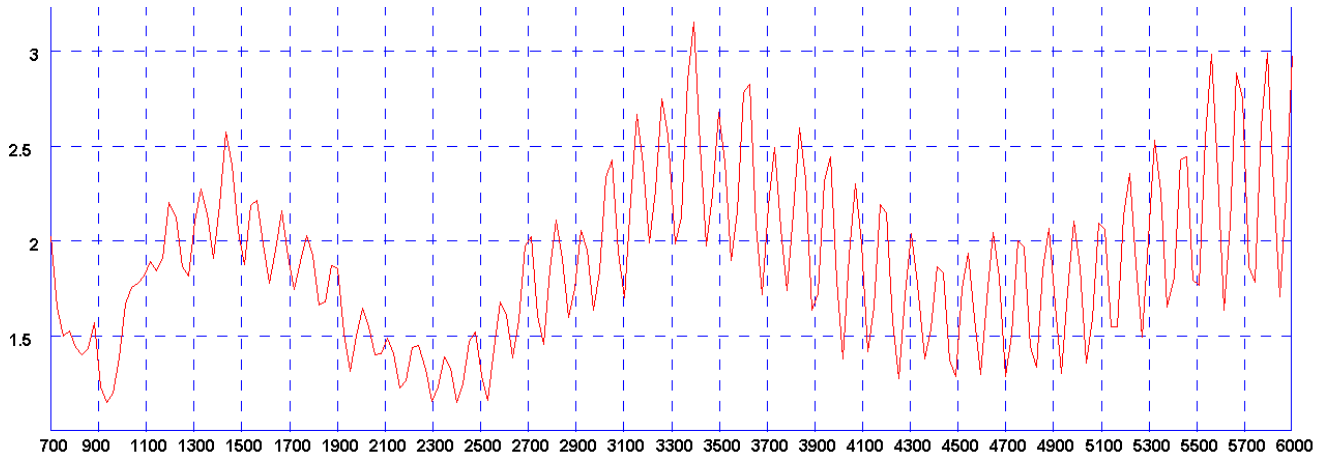
Technical Drawing



Cellular / LTE

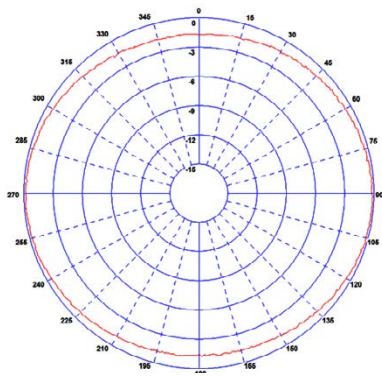
Transit Antenna

Typical VSWR*

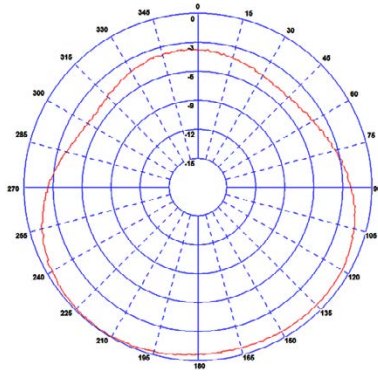


* Measured on a 600 x 600mm (2' x 2') ground plane with 1m (3') of low loss cable

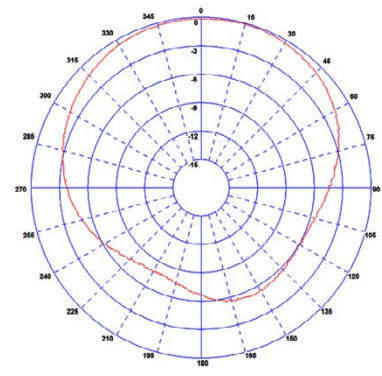
Typical H Plane - 700MHz



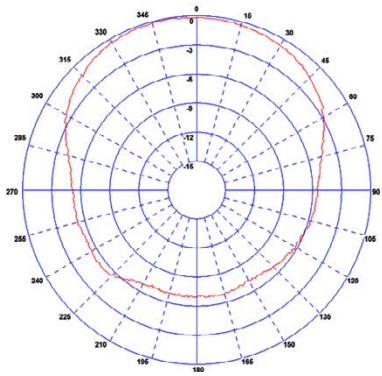
Typical H Plane - 800MHz



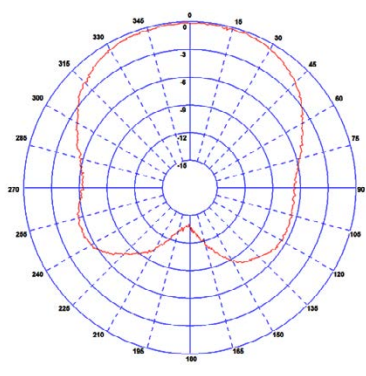
Typical H Plane - 900MHz



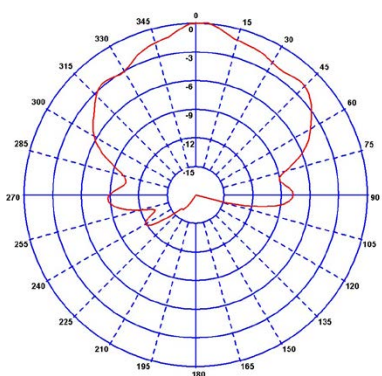
Typical H Plane - 1800MHz



Typical H Plane - 2100MHz



Typical E-Plane Pattern - (GPS) 1575MHz



Patterns measured on a 600 x 600 (2' x 2') ground plane with 1m (3') of low loss cable

Cellular / LTE

Transit Antenna

Part No.		
	TRNCG-7-60	TRNC-7-60
Electrical Data		
Frequency Range (MHz)	698-960/1710-6000 MHz	
	698-960MHz	5dBi
Peak Gain: **	1710-2700MHz	7dBi
	4900-6000MHz	10dBi
Polarisation	Vertical	
Typical VSWR*	< 2.5:1	
Pattern	Omni-directional	
Impedance	50Ω	
Max Input Power (W)	60	
GPS Data		
Frequency Range (MHz)	1560-1612	-
Impedance	50Ω	-
LNA Gain	26dB ± 3	-
Polarisation	Righth Hand Circular	-
Operating Voltage	3-5V DC	-
Current (Typical)	15mA	-
GPS Antenna EMC Compliance	EN 301 489-1 V1.81 & EN 301 489-3 V1.6.1 EN 50121-3-2:2015	-
Mechanical Data		
	Height (N/inc pad)	110 (4.33")
Dimensions (mm)	Width	87 (3.42")
	Length	260 (10.23")
Environmental Specification		
Operating Temp (°C)	-40° / +80°C (-40° / +176°F)	
Radome Material	Ultem 1000	
Radome Flame Retardance Rating	V0 (UL 94)	
Base Material	Cast Aluminium	
Ingress Protection	IP67 (Report No. 48883)	
Approvals Data		
Regulatory Approvals	EN50155:2007 (Dry heat & Cooling), EN61373:2010 / EN50155:2007 (Shock & Vibration), EN45545 - HL3 (flammability)	
Mounting Data		
Fixing	4 × mounting holes to suit M12 bolts	
Termination Data		
Termination	Comms	N (female) - DC grounded
	GPS	TNC (female) - surge protected

** Simulated on a 600 x 600mm (2' x 2') ground plane without cable.

* Measured on a 600 x 600mm (2' x 2') ground plane with 1m (3') of low loss cable

Panorama Antennas Ltd

Frogmore, London, SW18 1HF, United Kingdom

T: +44 (0)20 8877 4444

F: +44 (0)20 8877 4477

E: sales@panorama-antennas.com

www.panorama-antennas.com

Waiver: The data given above is indicative of the performance of the product/s under particular conditions and does not imply a guarantee of performance. These specifications are subject to change without notice.

Copyright © Panorama Antennas Ltd. All rights reserved.