

TRNC[G]-TET

Standard four hole rail fixing

Wideband UHF element

Optional Integrated GPS / GNSS / antenna [TRNCG version]

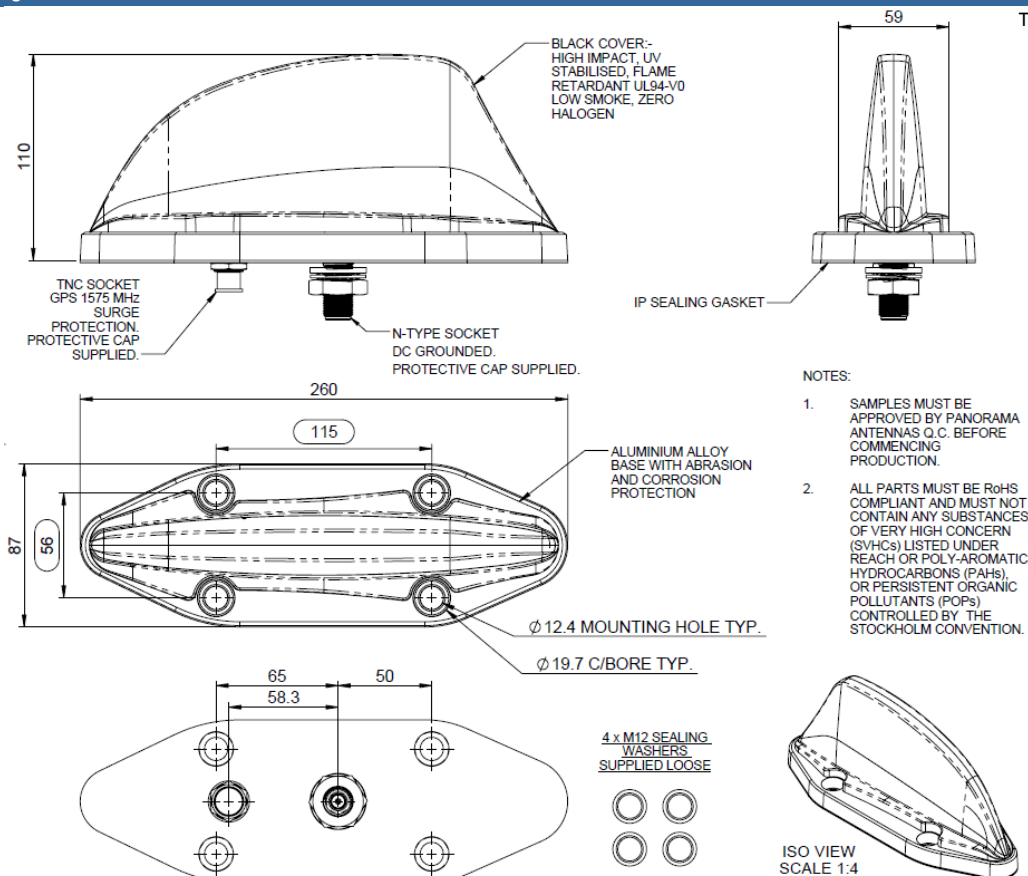


The TRNC(G) antenna series has been designed specifically for use on trains, trams and buses underground or over ground.

The TRNC(G)-TET range covers 380-430MHz UHF with optional GPS/GNSS with a 26dB LNA. The radiating element is DC grounded and, in versions with a GPS module it is protected by a gas discharge surge arrestor.

Housed in a high impact, flame retardant Ultem housing, the TRNC(G) series is weatherproof ensuring that the antenna's performance is never compromised.

Technical Drawing

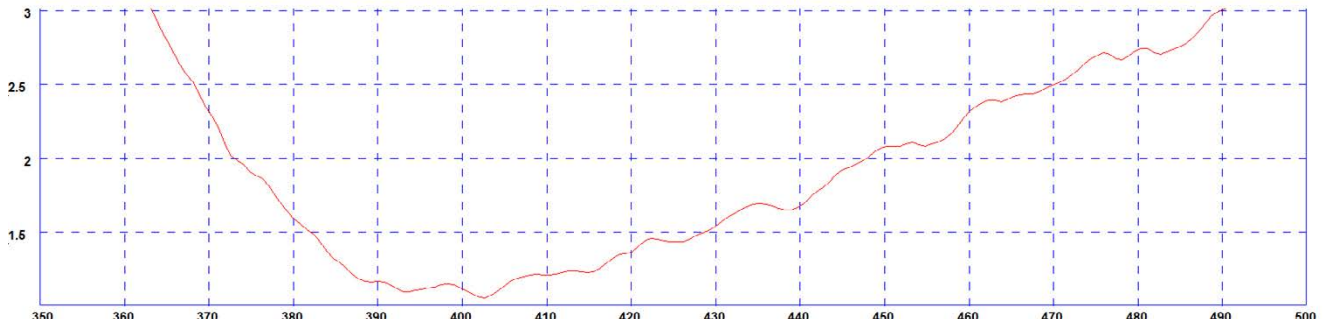


TRNCG-TET Shown

TETRA UHF

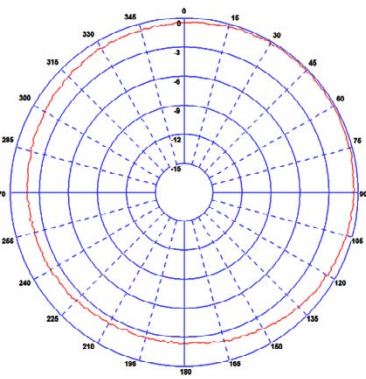
UHF Transit Antenna

Typical VSWR*

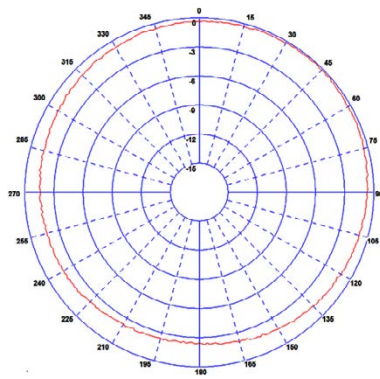


* Measured on a 600 x 600mm (2' x 2') ground plane with 1m (3') of low loss cable

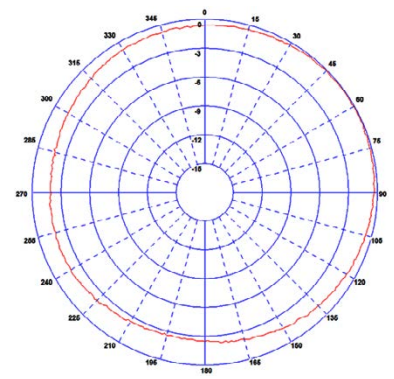
Typical H Plane - 380MHz



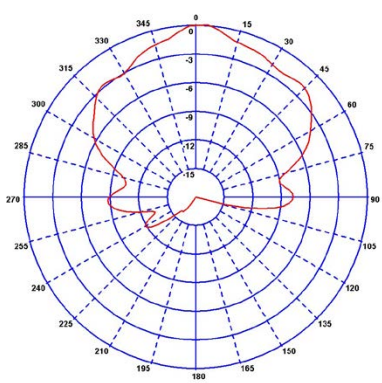
Typical H Plane - 400MHz



Typical H Plane - 430MHz



Typical E-Plane Pattern - (GPS) 1575MHz



TETRA UHF

UHF Transit Antenna

| Part No. | | |
|--------------------------------|--------------------|--|
| TRNCG-TET | | TRNC-TET |
| Electrical Data | | |
| Frequency Range (MHz) | | 380-430 MHz |
| Peak Gain: ** | 380-430MHz | 5dBi |
| Polarisation | | Vertical |
| Typical VSWR* | | < 2:1 |
| Pattern | | Omni-directional |
| Impedance | | 50Ω |
| Max Input Power (W) | | 60 |
| GPS Data | | |
| Frequency Range (MHz) | | 1560-1612 - |
| Impedance | | 50Ω - |
| LNA Gain | | 26dB ± 3 - |
| Polarisation | | Rigth Hand Circular - |
| Operating Voltage | | 3-5V DC - |
| Current (Typical) | | 15mA - |
| GPS Antenna EMC Compliance | | EN 301 489-1 V1.81 & EN 301 489-3 V1.6.1 EN 50121-3-2:2015 - |
| Mechanical Data | | |
| Dimensions (mm) | Height (N/inc pad) | 110 (4.33") |
| | Width | 87 (3.42") |
| | Length | 260 (10.23") |
| Environmental Specification | | |
| Operating Temp (°C) | | -40° / +80°C (-40° / +176°F) |
| Radome Material | | Ultem 1000 |
| Radome Flame Retardance Rating | | V0 (UL 94) |
| Base Material | | Cast Aluminium |
| Ingress Protection | | IP67 (Report No. 48883) |
| Approvals Data | | |
| Regulatory Approvals | | EN50155:2007 (Dry heat & Cooling), EN61373:2010 / EN50155:2007 (Shock & Vibration), EN45545 - HL3 (flammability) |
| Mounting Data | | |
| Fixing | | 4 × mounting holes to suit M12 bolts |
| Termination Data | | |
| Termination | Comms | N (female) - DC grounded |
| | GPS | TNC (female) - surge protected - |

** Simulated on a 600 x 600mm (2' x 2') ground plane without cable.

* Measured on a 600 x 600mm (2' x 2') ground plane with 1m (3') of low loss cable.

Panorama Antennas Ltd

Frogmore, London, SW18 1HF, United Kingdom

T: +44 (0)20 8877 4444

F: +44 (0)20 8877 4477

E: sales@panorama-antennas.com

www.panorama-antennas.com

Waiver: The data given above is indicative of the performance of the product/s under particular conditions and does not imply a guarantee of performance. These specifications are subject to change without notice.

Copyright © Panorama Antennas Ltd. All rights reserved.