

DRG. No. **BM390-8BL**

TITLE
**BRACKET MOUNTED
 1/2W ANTENNA ASSY.
 380-400 MHZ.
 8m COAX, BNC LOOSE**

MATERIAL

FINISH

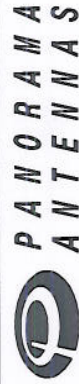
DRAWN B.L. DO.CHECK K.D.

SCALE 1:2 DIMENSIONS IN mm

TOLERANCES UNLESS OTHERWISE STATED
 0 DEC. PLACE ± 0.5 2 DEC. PLACES ± 0.1
 1 DEC. PLACE ± 0.2 ANGULAR $\pm 1'$

DO NOT SCALE	PROJECTION		APPROVAL
	ISSUE	DATE	
C/NOTE	1	06.03.08	K.D.
	2	23.07.13	K.D.
	3	25.08.15	KD

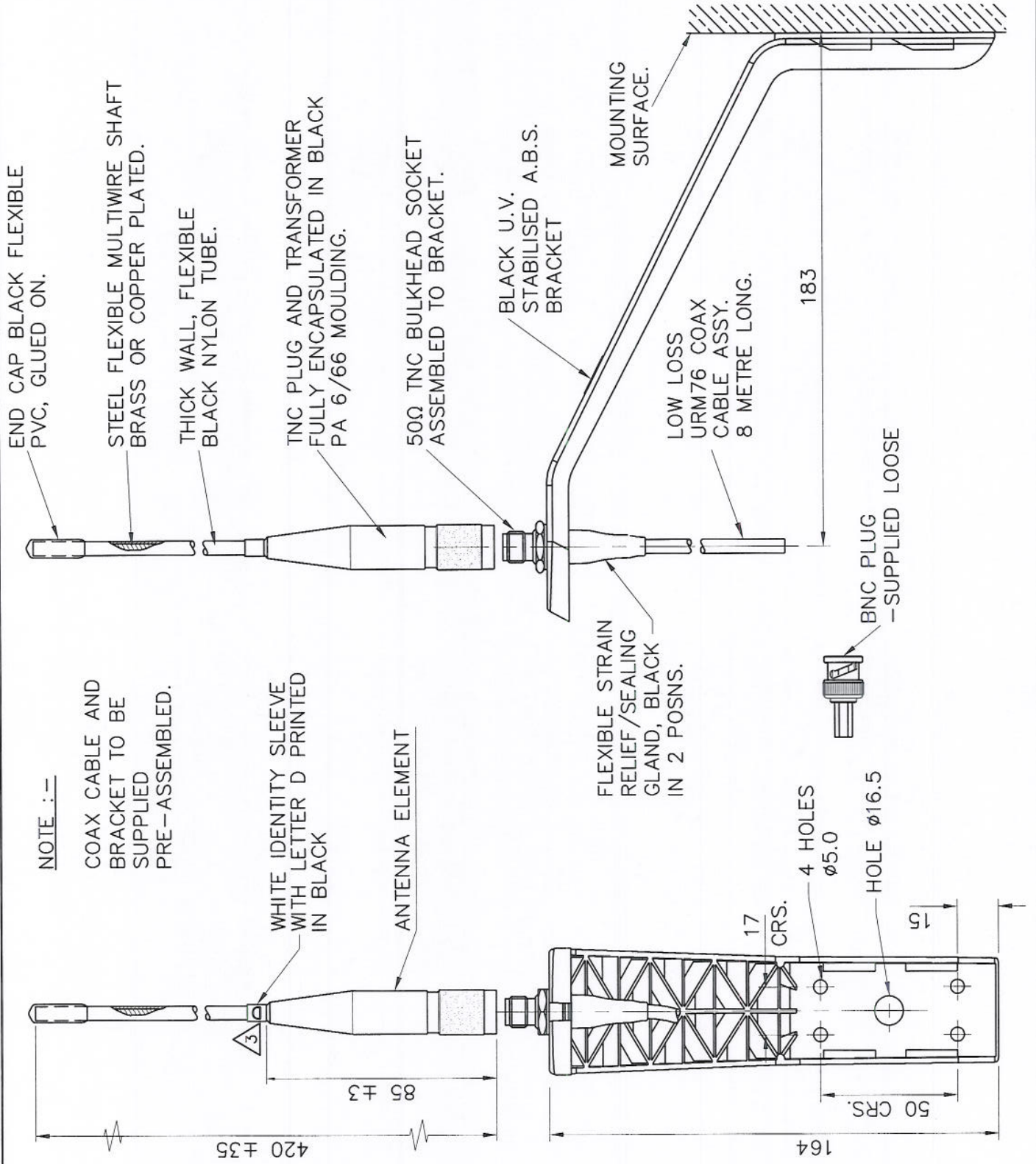
Δ — DENOTES LATEST ISSUE CHANGES



THIS DOCUMENT MUST NOT BE COPIED OR DISCLOSED TO A THIRD PARTY WITHOUT THE WRITTEN CONSENT OF PANTORAMA ANTENNAS LTD.

© 2008

A4



NOTE :-

COAX CABLE AND BRACKET TO BE SUPPLIED PRE-ASSEMBLED.

WHITE IDENTITY SLEEVE WITH LETTER D PRINTED IN BLACK

ANTENNA ELEMENT

FLEXIBLE STRAIN RELIEF/SEALING GLAND, BLACK IN 2 POSNS.

BNC PLUG - SUPPLIED LOOSE

LOW LOSS URM76 COAX CABLE ASSY. 8 METRE LONG.

BLACK U.V. STABILISED A.B.S. BRACKET

MOUNTING SURFACE.

50Ω TNC BULKHEAD SOCKET ASSEMBLED TO BRACKET.

TNC PLUG AND TRANSFORMER FULLY ENCAPSULATED IN BLACK PA 6/66 MOULDING.

THICK WALL, FLEXIBLE BLACK NYLON TUBE.

STEEL FLEXIBLE MULTIWIRE SHAFT BRASS OR COPPER PLATED.

END CAP BLACK FLEXIBLE PVC, GLUED ON.