

Private Mobile Radio

Elevated Antenna

04/04/2016 v2



BSV

Mast mount

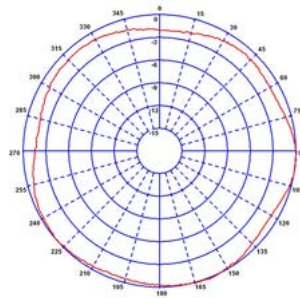
Temporary or permanent fixing

Quick assembly

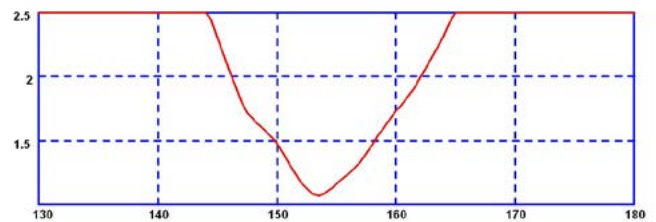
Panorama Elevated Antennas can be used for temporary field use or permanent installations. The range uses flexible helical elements to provide an effective but compact groundplane.

The antenna's centre fitting has a metal body to carry the radials and a moulded insulator for the radiator. The whip element is plastic coated for weather proofing and durability.

Typical H-Plane (154MHz)

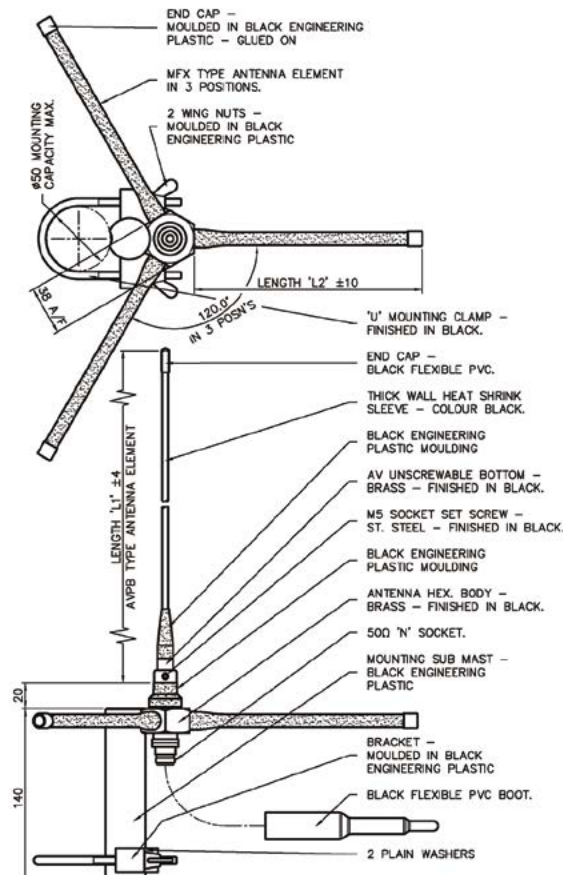


Typical VSWR (154MHz)*



* All electrical measurements taken in free space with 5m (17') of CS23 cable.

Technical Drawing



Part No.		BSV-E3	BSV-E4	BSV-E5	BSV-H3	BSV-H4	BSV-H5	BSV-H6	BSV-H7
Electrical Data									
Frequency Range (MHz)		67-74	74-81	81-88	132-143	141-151	149-159	156-162	162-174
Operational Band		E3	E4	E5	H3	H4	H5	H6	H7
Peak Gain: Isotropic		2dBi	2dBi	2dBi	2dBi	2dBi	2dBi	2dBi	2dBi
Compared to ¼ wave		0dB	0dB	0dB	0dB	0dB	0dB	0dB	0dB
Typical VSWR		Tx ≤ 1.5:1, Rx ≤ 2:1	Tx ≤ 1.5:1, Rx ≤ 2:1	Tx ≤ 1.5:1, Rx ≤ 2:1	Tx ≤ 1.5:1, Rx ≤ 2:1	Tx ≤ 1.5:1, Rx ≤ 2:1	Tx ≤ 1.5:1, Rx ≤ 2:1	Tx ≤ 1.5:1, Rx ≤ 2:1	Tx ≤ 1.5:1, Rx ≤ 2:1
Polarisation		Vertical	Vertical	Vertical	Vertical	Vertical	Vertical	Vertical	Vertical
Pattern		Omni-directional	Omni-directional	Omni-directional	Omni-directional	Omni-directional	Omni-directional	Omni-directional	Omni-directional
Impedance		50Ω	50Ω	50Ω	50Ω	50Ω	50Ω	50Ω	50Ω
Max Input Power (W)		100	100	100	100	100	100	100	100
Mechanical Data									
Dimensions (mm)	Total Length	1295 (4.2')	1025 (3.3')	850 (2.8')	739 (2.4')	705 (2.3')	668 (2.2')	665 (2.2')	643 (2.1')
	'L1' length	1135 (3.7')	865 (2.8')	690 (2.2')	579 (1.9')	545 (1.8')	508 (1.7')	505 (1.6')	483 (1.5')
	'L2' length	185 (7.2")	185 (7.2")	175 (6.9")	160 (6.3")	145 (5.7")	140 (5.5")	137 (5.4")	130 (5.1")
Operating Temp (°C)		-40° / +80°C (-40° / +176°F)	-40° / +80°C (-40° / +176°F)	-40° / +80°C (-40° / +176°F)	-40° / +80°C (-40° / +176°F)	-40° / +80°C (-40° / +176°F)	-40° / +80°C (-40° / +176°F)	-40° / +80°C (-40° / +176°F)	-40° / +80°C (-40° / +176°F)
Colour		Black	Black	Black	Black	Black	Black	Black	Black
Termination Data									
Termination		N socket	N socket	N socket	N socket	N socket	N socket	N socket	N socket

Part No.		BSV-JRC	BSV-K5	BSV-K6	BSV-K7	BSV-L	BSV-M	BSV-N	BSV-P
Electrical Data									
Frequency Range (MHz)		139-157	174-192	192-208	208-225	220-250	245-275	270-300	300-336
Operational Band		JRC	K5	K6	K7	L	M	N	P
Peak Gain: Isotropic		2dBi	2dBi	2dBi	2dBi	2dBi	2dBi	2dBi	2dBi
Compared to ¼ wave		0dB	0dB	0dB	0dB	0dB	0dB	0dB	0dB
Typical VSWR		Tx ≤ 1.5:1, Rx ≤ 2:1	Tx ≤ 1.5:1, Rx ≤ 2:1	Tx ≤ 1.5:1, Rx ≤ 2:1	Tx ≤ 1.5:1, Rx ≤ 2:1	Tx ≤ 1.5:1, Rx ≤ 2:1	Tx ≤ 1.5:1, Rx ≤ 2:1	Tx ≤ 1.5:1, Rx ≤ 2:1	Tx ≤ 1.5:1, Rx ≤ 2:1
Polarisation		Vertical	Vertical	Vertical	Vertical	Vertical	Vertical	Vertical	Vertical
Pattern		Omni-directional	Omni-directional	Omni-directional	Omni-directional	Omni-directional	Omni-directional	Omni-directional	Omni-directional
Impedance		50Ω	50Ω	50Ω	50Ω	50Ω	50Ω	50Ω	50Ω
Max Input Power (W)		100	100	100	100	100	100	100	100
Mechanical Data									
Dimensions (mm)	Total Length	690 (2.2')	600 (1.9')	570 (1.8')	548 (1.7')	472 (1.5')	453 (1.4')	427 (1.3')	400 (1.2')
	'L1' length	530 (1.7')	440 (1.4')	410 (1.3')	388 (1.2')	312 (1')	293 (11.5")	267 (10.5")	240 (9.4")
	'L2' length	140 (5.5")	115 (4.5")	105 (4.1")	90 (3.5")	85 (3.3")	80 (3.1")	66 (2.6")	65 (2.5")
Operating Temp (°C)		-40° / +80°C (-40° / +176°F)	-40° / +80°C (-40° / +176°F)	-40° / +80°C (-40° / +176°F)	-40° / +80°C (-40° / +176°F)	-40° / +80°C (-40° / +176°F)	-40° / +80°C (-40° / +176°F)	-40° / +80°C (-40° / +176°F)	-40° / +80°C (-40° / +176°F)
Colour		Black	Black	Black	Black	Black	Black	Black	Black
Termination Data									
Termination		N socket	N socket	N socket	N socket	N socket	N socket	N socket	N socket



Panorama Antennas Ltd

Frogmore, London, SW18 1HF, United Kingdom

T: +44 (0)20 8877 4444
F: +44 (0)20 8877 4477

E: sales@panorama-antennas.com
www.panorama-antennas.com

Waiver: The data given above is indicative of the performance of the product/s under particular conditions and does not imply a guarantee of performance. These specifications are subject to change without notice.

Copyright © Panorama Antennas Ltd. All rights reserved.