

Private Mobile Radio

Temporary Clip Dipole Antenna



CDV

Rugged construction

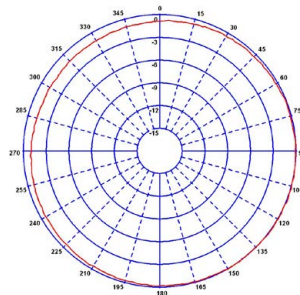
Fast installation

Moulded in coaxial cable

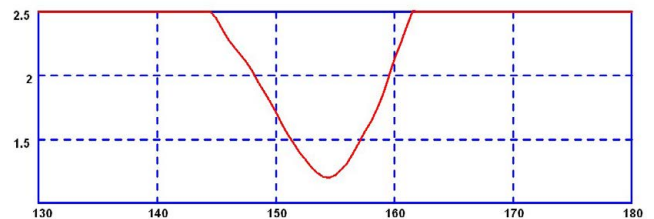
The performance and scope of portable equipment can often be considerably improved by extending the antenna to a more efficient height. Spring clip antennas provide an easy way to do this.

The jaws of the spring clip are moulded in nylon and are fully adjustable for any angle. The antenna features a fully moulded coaxial connector for weather protection and resilience.

Typical H-Plane (154MHz)

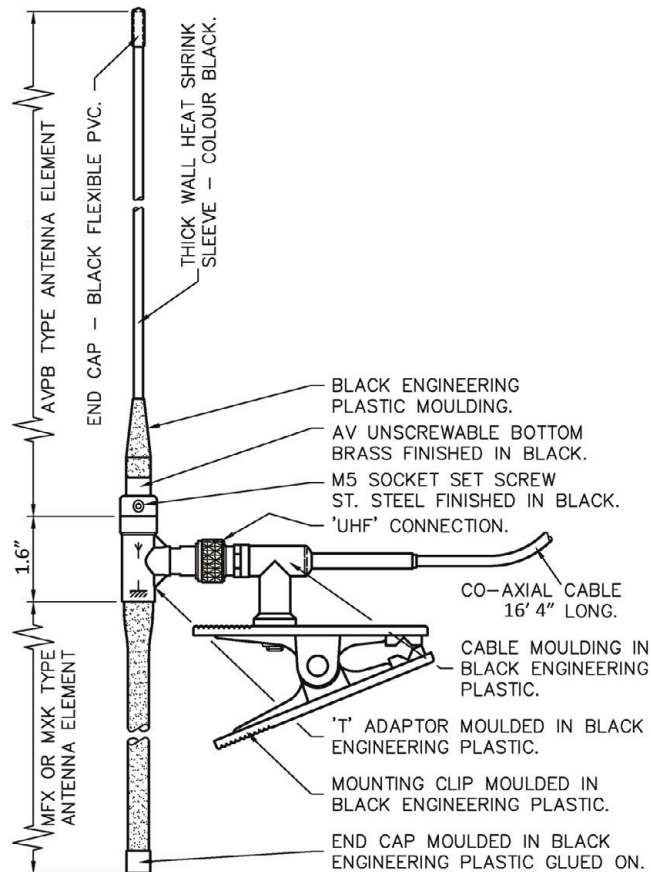


Typical VSWR



*Measured in free space with 3m (9.8') CS23 cable

Technical Drawing



Part No.		CDV-E3	CDV-E4	CDV-E5	CDV-H3	CDV-H4	CDV-H5	CDV-H6	CDV-H7
Electrical Data									
Frequency Range (MHz)		67-74	74-81	81-88	132-143	141-151	149-159	156-162	162-174
Operational Band		E3	E4	E5	H3	H4	H5	H6	H7
Peak Gain: Isotropic		2dBi	2dBi	2dBi	2dBi	2dBi	2dBi	2dBi	2dBi
Compared to ¼ wave		0dB	0dB	0dB	0dB	0dB	0dB	0dB	0dB
Typical VSWR		< 3:1	< 3:1	< 3:1	< 2:1	< 2:1	< 2:1	< 2:1	< 2:1
Polarisation		Vertical	Vertical	Vertical	Vertical	Vertical	Vertical	Vertical	Vertical
Pattern		Omni-directional	Omni-directional	Omni-directional	Omni-directional	Omni-directional	Omni-directional	Omni-directional	Omni-directional
Impedance		50Ω	50Ω	50Ω	50Ω	50Ω	50Ω	50Ω	50Ω
Max Input Power (W)		25	25	25	25	25	25	25	25
Mechanical Data									
Dimensions (mm)	Total Length	1410 (4.6')	1212 (4')	1089 (3.6')	737 (2.4')	701 (2.3')	665 (2.2')	612 (2')	590 (1.9')
	'L1' length	1190 (3.9')	995 (3.3')	890 (2.9')	535 (1.8')	504 (1.6')	478 (1.6')	430 (1.4')	411 (1.3')
	'L2' length	185 (7.2")	175 (6.9")	157 (6.2")	160 (6.3")	155 (6.1")	145 (5.7")	140 (5.5")	137 (5.4")
Operating Temp (°C)		-40° / +80°C (-40° / +176°F)	-40° / +80°C (-40° / +176°F)	-40° / +80°C (-40° / +176°F)	-40° / +80°C (-40° / +176°F)	-40° / +80°C (-40° / +176°F)	-40° / +80°C (-40° / +176°F)	-40° / +80°C (-40° / +176°F)	-40° / +80°C (-40° / +176°F)
Colour		Black	Black	Black	Black	Black	Black	Black	Black
Cable Data									
Type		CS23 (RG58 c/u)	CS23 (RG58 c/u)	CS23 (RG58 c/u)	CS23 (RG58 c/u)	CS23 (RG58 c/u)	CS23 (RG58 c/u)	CS23 (RG58 c/u)	CS23 (RG58 c/u)
Length (m)		5 (16.4")	5 (16.4")	5 (16.4")	5 (16.4")	5 (16.4")	5 (16.4")	5 (16.4")	5 (16.4")

Part No.		CDV-JRC	CDV-K5	CDV-K6	CDV-K7	CDV-M	CDV-N	CDV-P	CDV-R
Electrical Data									
Frequency Range (MHz)		139-157	174-192	192-208	208-225	245-275	270-300	300-336	330-366
Operational Band		JRC	K5	K6	K7	M	N	P	R
Peak Gain: Isotropic		2dBi	2dBi	2dBi	2dBi	2dBi	2dBi	2dBi	2dBi
Compared to ¼ wave		0dB	0dB	0dB	0dB	0dB	0dB	0dB	0dB
Typical VSWR		< 2.5:1	< 2:1	< 2:1	< 2:1	< 2:1	< 2:1	< 2:1	< 2:1
Polarisation		Vertical	Vertical	Vertical	Vertical	Vertical	Vertical	Vertical	Vertical
Pattern		Omni-directional	Omni-directional	Omni-directional	Omni-directional	Omni-directional	Omni-directional	Omni-directional	Omni-directional
Impedance		50Ω	50Ω	50Ω	50Ω	50Ω	50Ω	50Ω	50Ω
Max Input Power (W)		25	25	25	25	25	25	25	25
Mechanical Data									
Dimensions (mm)	Total Length	694 (2.3')	542 (1.8")	498 (1.6')	458 (1.5')	366 (1.2')	375 (1.2')	326 (1.1')	302 (1')
	'L1' length	497 (1.6')	372 (1.2')	341 (1.1')	311 (1.1')	242 (9.5")	260 (10.2")	219 (8.6")	200 (7.9")
	'L2' length	155 (6.1")	128 (5")	115 (4.5")	105 (4.1")	82 (3.2")	72 (2.8")	65 (2.5")	60 (2.4")
Operating Temp (°C)		-40° / +80°C (-40° / +176°F)	-40° / +80°C (-40° / +176°F)	-40° / +80°C (-40° / +176°F)	-40° / +80°C (-40° / +176°F)	-40° / +80°C (-40° / +176°F)	-40° / +80°C (-40° / +176°F)	-40° / +80°C (-40° / +176°F)	-40° / +80°C (-40° / +176°F)
Colour		Black	Black	Black	Black	Black	Black	Black	Black
Cable Data									
Type		CS23 (RG58 c/u)	CS23 (RG58 c/u)	CS23 (RG58 c/u)	CS23 (RG58 c/u)	CS23 (RG58 c/u)	CS23 (RG58 c/u)	CS23 (RG58 c/u)	CS23 (RG58 c/u)
Length (m)		5 (16.4")	5 (16.4")	5 (16.4")	5 (16.4")	5 (16.4")	5 (16.4")	5 (16.4")	5 (16.4")

Waiver: The data given above is indicative of the performance of the product/s under particular conditions and does not imply a guarantee of performance. These specifications are subject to change without notice.

Copyright © Panorama Antennas Ltd. All rights reserved.



Panorama Antennas Ltd
Frogmore, London, SW18 1HF, United Kingdom

T: +44 (0)20 8877 4444
F: +44 (0)20 8877 4477
E: sales@panorama-antennas.com
www.panorama-antennas.com