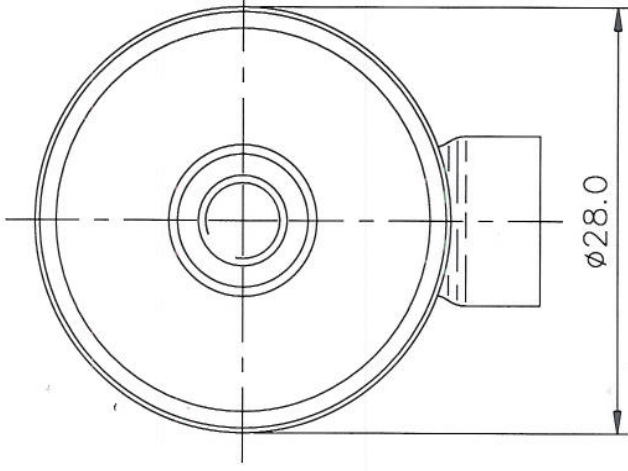


ALSO INCLUDES INSERTION  
TOOL (SP8-0057) AND  
INSTALLATION INSTRUCTIONS  
(SW3-502). 



ADAPTOR CAP MOULDED  
IN BLACK TPE

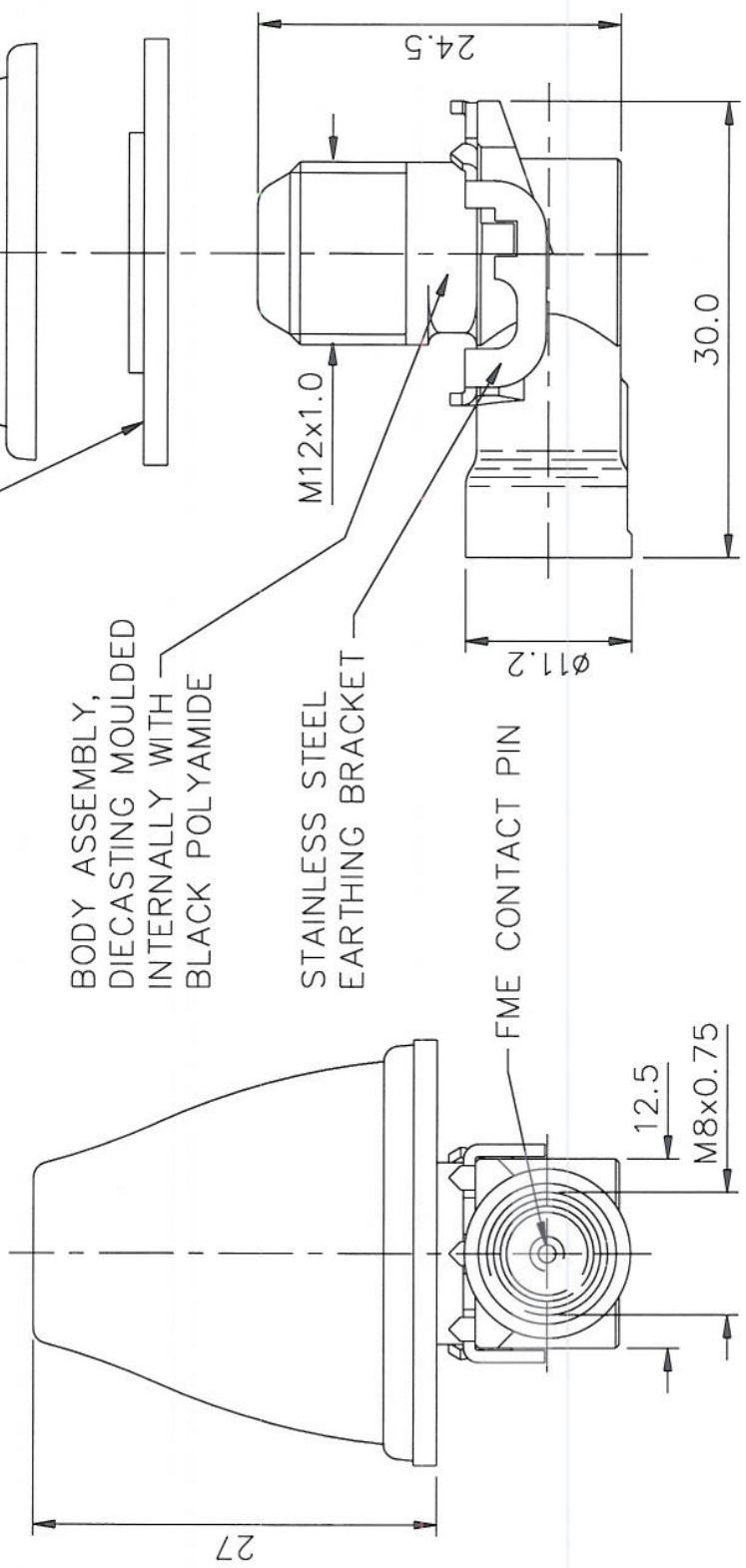
CAP MOULDED IN  
BLACK POLYAMIDE

SEAL/LOCATING WASHER  
MOULDED IN BLACK TPE

BODY ASSEMBLY,  
DIECASTING MOULDED  
INTERNALLY WITH  
BLACK POLYAMIDE

STAINLESS STEEL  
EARTHING BRACKET

FME CONTACT PIN



DRG.  
No.

EB

TITLE

EUROPEAN  
ANTENNA BASE

DRAWN

A.R.

DO.CHECK

P.E.

MATERIAL

FINISH

DIMENSIONS IN mm

SCALE

2:1

FILENAME

EB

TOLERANCES UNLESS OTHERWISE STATED

0 DEC. PLACE  $\pm 0.5$  2 DEC. PLACES  $\pm 0.1$

1 DEC. PLACE  $\pm 0.2$  ANGULAR  $\pm 1^\circ$

DO NOT  
SCALE

PROJECTION



C/NOTE

ISSUE

DATE

SIGN.

01019

1

26.7.95

K.D.

01019

2

22.8.95

K.D.

01019

3

26.10.95

K.D.

01275

4

25.1.96

K.D.

01019

5

11.06.13

K.D.

01019

6

18.11.16

K.D.

 - DENOTES LATEST  
ISSUE CHANGES

PANORAMA ANTENNAS  
LTD. LONDON

THIS DOCUMENT MUST NOT BE COPIED  
OR DISCLOSED TO A THIRD PARTY  
WITHOUT THE WRITTEN CONSENT OF  
PANORAMA ANTENNAS LTD.

© 1995

A4