

1

2

3

4

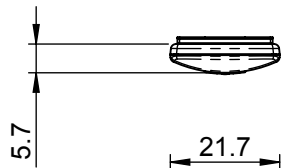
5

A

B

C

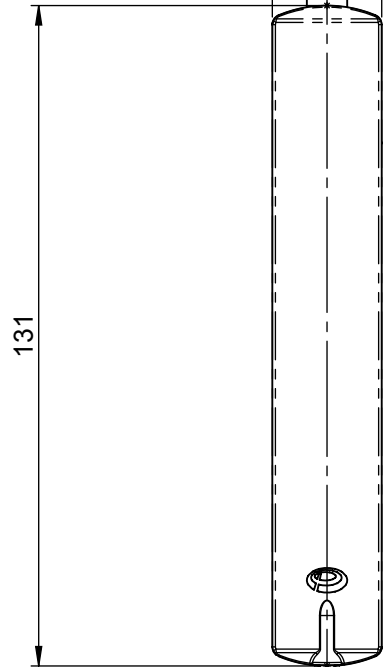
D



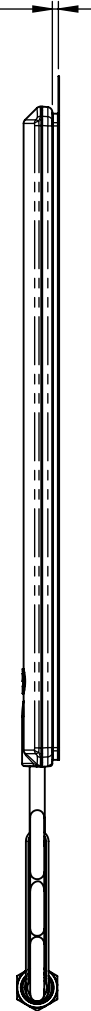
1.2 THICK - BLACK
HIGH PERFORMANCE
ADHESIVE PAD

FREQUENCY RANGE.

698 - 960 MHz
1710 - 2170 MHz
2396 - 2700 MHz



PLASTIC COVERS
MOULDED IN BLACK ASA.



RG174 COAX CABLE
3m LONG

SMA PLUG

NOTES:



1. SAMPLES TO BE APPROVED BY PANORAMA ANTENNAS Q.C. BEFORE COMMENCING PRODUCTION.
2. ALL PARTS MUST BE RoHS COMPLIANT AND MUST NOT CONTAIN ANY SUBSTANCES OF VERY HIGH CONCERN (SVHCs) LISTED UNDER REACH OR POLY-AROMATIC HYDROCARBONS (PAHs), OR PERSISTENT ORGANIC POLLUTANTS (POPs) CONTROLLED BY THE STOCKHOLM CONVENTION.

PRODUCT/ASSEMBLY
CONSUMER WIRELESS PRODUCTS

DESCRIPTION
CELLULAR 2G/3G/4G/GPS STRIP ANTENNA 3m CABLE, SMA PLUG, ADHESIVE PAD

MATERIAL
N/A

FINISH
N/A

WEIGHT
58.0 g

APPROVED
KD DO.CHECK PE

SCALE
1:1.5 DIMENSIONS IN mm

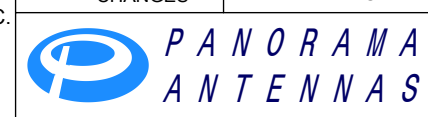
DO NOT SCALE 3RD ANGLE PROJECTION

PCN	REV.	DESCRIPTION	DATE	DRN
01019	1	PRODUCTION ISSUE. NOTES UPDATED.	05/03/2014	ATB

TOLERANCES UNLESS OTHERWISE STATED

0 DEC. PLACE	±0.5	2 DEC. PLACES	±0.1
1 DEC. PLACE	±0.2	ANGULAR	±1°

△ DENOTES LATEST ISSUE CHANGES ○ DENOTES CRITICAL VALUE



THIS DOCUMENT MUST NOT BE COPIED OR DISCLOSED TO A THIRD PARTY WITHOUT THE WRITTEN CONSENT OF PANORAMA ANTENNAS LTD.