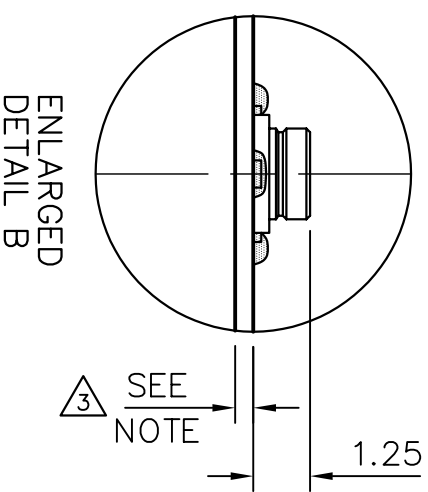
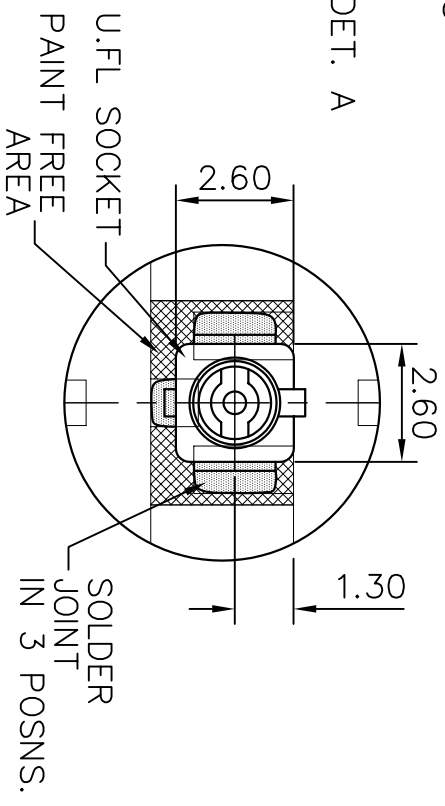
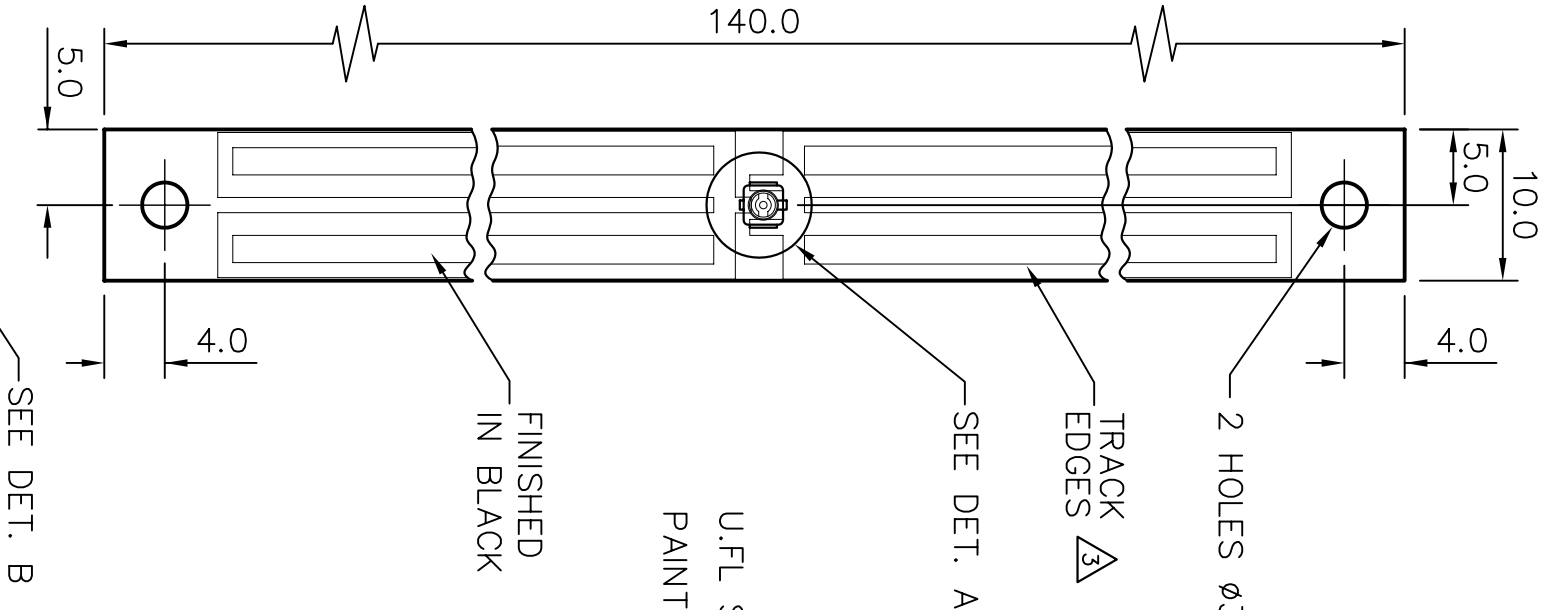




TCE-C3G-UF

DRG.
No.

FREQUENCY RANGE
805-894MHz.
890-960MHz
1710-1880MHz
1900-2170MHz.



NOTE: -

PCB MATERIAL - 0.40 THICK.
AFTER PAINTING - 0.50/0.60 THICK.

△ - DENOTES LATEST
ISSUE CHANGES

01019	1	22.02.08	K.D.	TOLERANCES UNLESS OTHERWISE STATED
01019	2	03.03.08	K.D.	0 DEC. PLACE ± 0.5 2 DEC. PLACES ± 0.1
01019	3	07.08.08	K.D.	1 DEC. PLACE ± 0.2 ANGULAR $\pm 1^\circ$
				MATERIAL
				FINISH
C/NOTE	ISSUE	DATE	APPROVAL	

TITLE

MULTIBAND PCB ANTENNA -
U.F.L. SOCKET

DRAWN B.L.	DO.CHECK K.D.	SCALE 2:1 & 5:1	DIMENSIONS IN mm
---------------	------------------	--------------------	---------------------

PANORAMA ANTENNAS