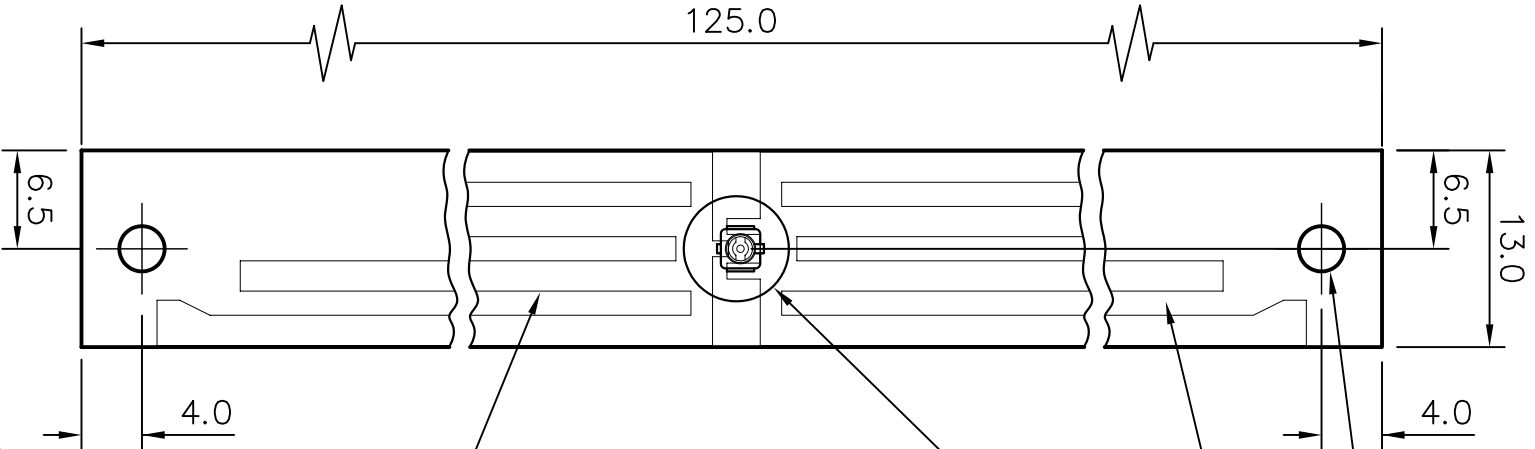




TCF-C3G-UF

DRG.
No.

FREQUENCY RANGE
805-894MHZ.
890-960MHZ
1710-1880MHZ
1900-2170MHZ.



SEE DET. A

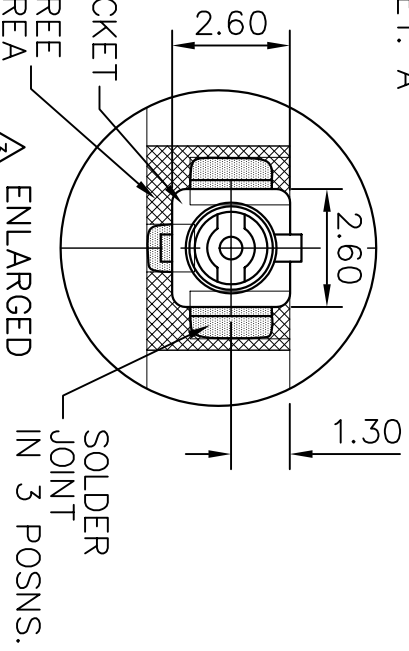
FINISHED
IN BLACK

2 HOLES $\phi 3.0$

U.F.L. SOCKET

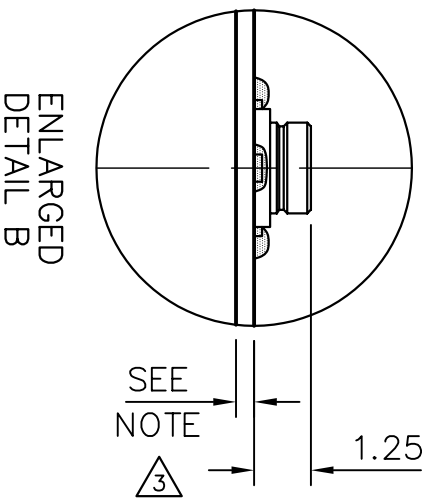
PAINT FREE
AREA

TRACK
EDGES



ENLARGED
DETAIL A

SOLDER
JOINT
IN 3 POSNS.



ENLARGED
DETAIL B

NOTE:-

PCB MATERIAL - 0.40 THICK.
AFTER PAINTING - 0.50/0.60 THICK.

— DENOTES LATEST
ISSUE CHANGES

01019	1	22.02.08	K.D.	TOLERANCES UNLESS OTHERWISE STATED
01019	2	03.03.08	K.D.	0 DEC. PLACE ± 0.5 2 DEC. PLACES ± 0.1
01019	3	07.08.08	K.D.	1 DEC. PLACE ± 0.2 ANGULAR $\pm 1^\circ$

MULTIBAND PCB ANTENNA -
U.F.L SOCKET

DRAWN B.L.	DO.CHECK K.D.	SCALE 2:1 & 5:1	DIMENSIONS IN mm
---------------	------------------	--------------------	---------------------

PANORAMA ANTENNAS

C/NOTE	ISSUE	DATE	APPROVAL
--------	-------	------	----------