

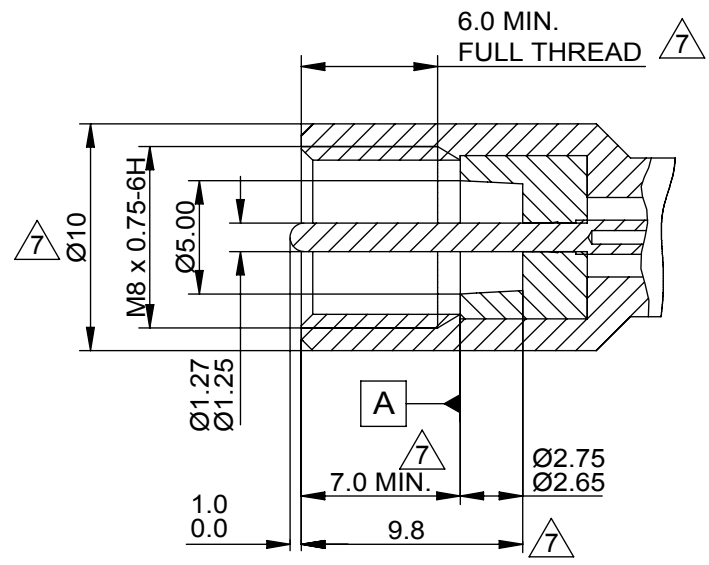
TOLERANCES UNLESS OTHERWISE STATED			
0 DEC. PLACES	±0.5	2 DEC. PLACES	±0.1
1 DEC. PLACE	±0.2	ANGULAR	±1°

**CABLE SPECIFICATION NOTES:**

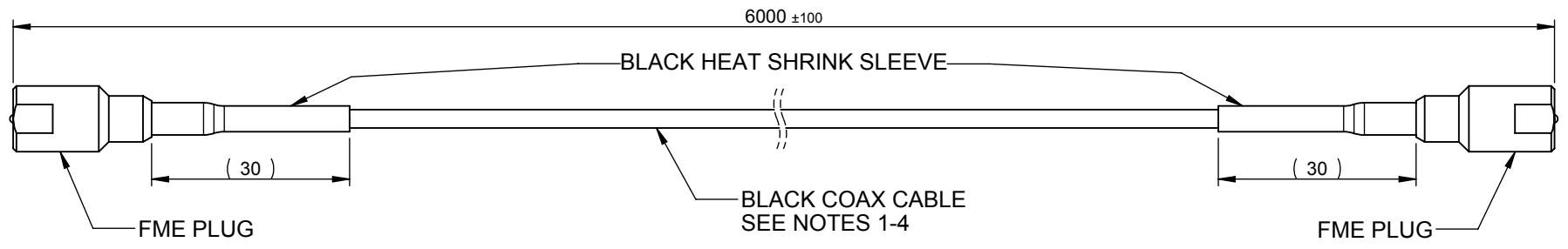
1. DIMENSIONS AND CONSTRUCTION TYPICAL OF JIS 1.5D-2V OR RG174A.
2. DIELECTRIC MATERIAL - CROSSLINK POLYTHENE.
3. IMPEDENCE- 50Ω.
4. ATTENUATION- 1.25dB/m @1.575GHz.

**GENERAL NOTES:**

1. MINIMUM CONNECTOR PULL OFF FORCE- 50N.
2. OUTER SHEATH- P.V.C. LEVEL OF DEHP IN P.V.C. MUST BE <1000PPM.
3. CONNECTORS MUST CONFORM TO STANDARD INTERFACE DIMENSIONS SHOWN IN ENLARGED CONNECTOR DETAIL.
4. ALL MATERIALS MUST BE RoHS COMPLIANT.
5. SAMPLES TO BE APPROVED BY PANORAMA ANTENNAS Q.C. BEFORE COMMENCING PRODUCTION.



ENLARGED DETAIL OF FME PLUG (IN 2 POSITIONS) SEE GENERAL NOTE 3.



01019	7	REDRAWN IN 2D AND 3D. INTERFACE DIMENSIONS AND NOTES UPDATED.	26/11/2012	PE
PCN	REV.	DESCRIPTION OF CHANGE	DATE	DRAWN
REVISIONS				

PRODUCT/ASSEMBLY <b>CABLES AND CABLE ASSEMBLIES</b>		DESCRIPTION <b>FME(m) - FME(m) RG174 COAX CABLE 6m LONG</b>			
MATERIAL <b>N/A</b>		APPROVED KD	DO.CHECK KD	SCALE 1:1	DIMENSIONS IN mm
FINISH <b>N/A</b>		<b>PANORAMA ANTENNAS</b>			
WEIGHT 92g	SHEET 1 OF 1				