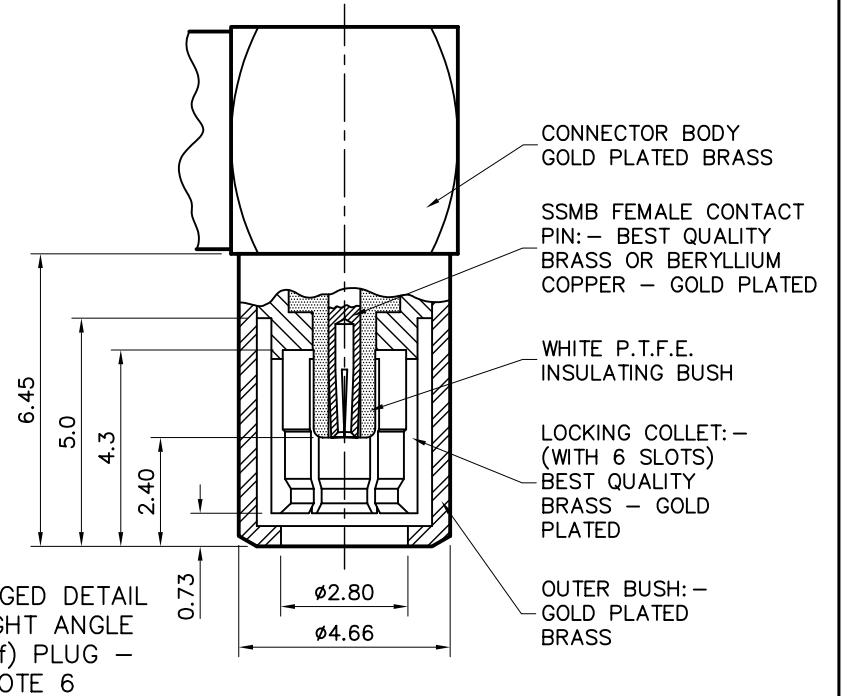


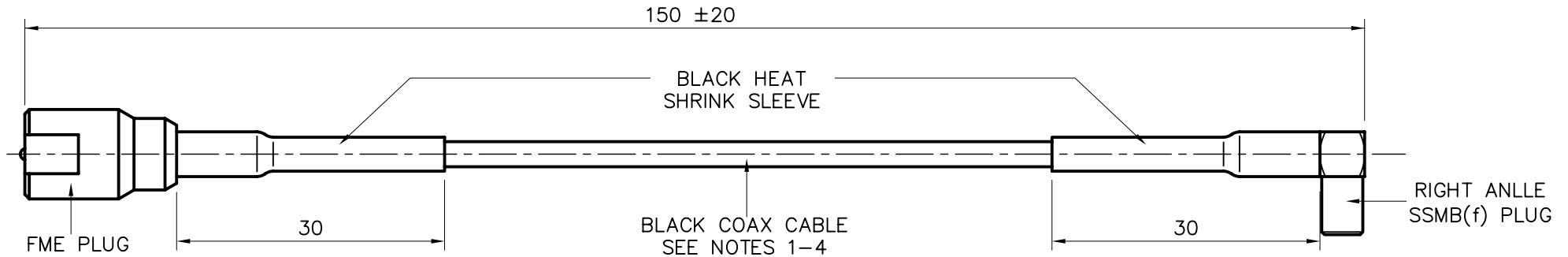
ENLARGED DETAIL OF FME PLUG - SEE NOTE 6

CABLE SPECIFICATION NOTES :-

1. DIMENSIONS AND CONSTRUCTION TYPICAL OF JIS 1.5D-2V OR RG174A
 2. DIELECTRIC MATERIAL CROSS LINK POLYTHENE
 3. IMPEDANCE - 50 OHMS
 4. ATTENUATION - 1.25dB/m @1.575GHz
- GENERAL NOTES :-
5. MINIMUM CONNECTOR PULL OFF FORCE - 50N
 6. CONNECTORS MUST CONFORM TO STANDARD INTERFACE DIMENSIONS SHOWN IN DETAIL 1 & 2
 7. ALL MATERIALS USED MUST BE RoHS COMPLIANT



ENLARGED DETAIL OF RIGHT ANGLE SSMB(f) PLUG - SEE NOTE 6



REDRAWN WITH CONNECTORS INTERFACE DIMENSIONS ADDED

01019	1	18.8.06	K.D.	TOLERANCES UNLESS OTHERWISE STATED 0 DEC. PLACE ±0.5 2 DEC. PLACES ±0.1 1 DEC. PLACE ±0.2 ANGULAR ±1'
01019	2	14.8.09	K.D.	
				MATERIAL
				FINISH
C/NOTE	ISSUE	DATE	APPROVAL	

TITLE
FME(m) - R/ANGLE SSMB(f) PLUG
RG174 COAX CABLE 150mm LONG

DRAWN T.S.	DO.CHECK K.D.	SCALE 3:2	DIMENSIONS IN mm
---------------	------------------	--------------	---------------------