

DRG. No. **BMVAR**

TITLE  
**BRACKET MOUNTED  
 1/2W UHF ANTENNA  
 ASSEMBLY**

MATERIAL

FINISH

DRAWN M.M. DO.CHECK **I.C**

SCALE 1:2 DIMENSIONS IN mm

TOLERANCES UNLESS OTHERWISE STATED  
 0 DEC. PLACE  $\pm 0.5$  2 DEC. PLACES  $\pm 0.1$   
 1 DEC. PLACE  $\pm 0.2$  ANGULAR  $\pm 1^\circ$

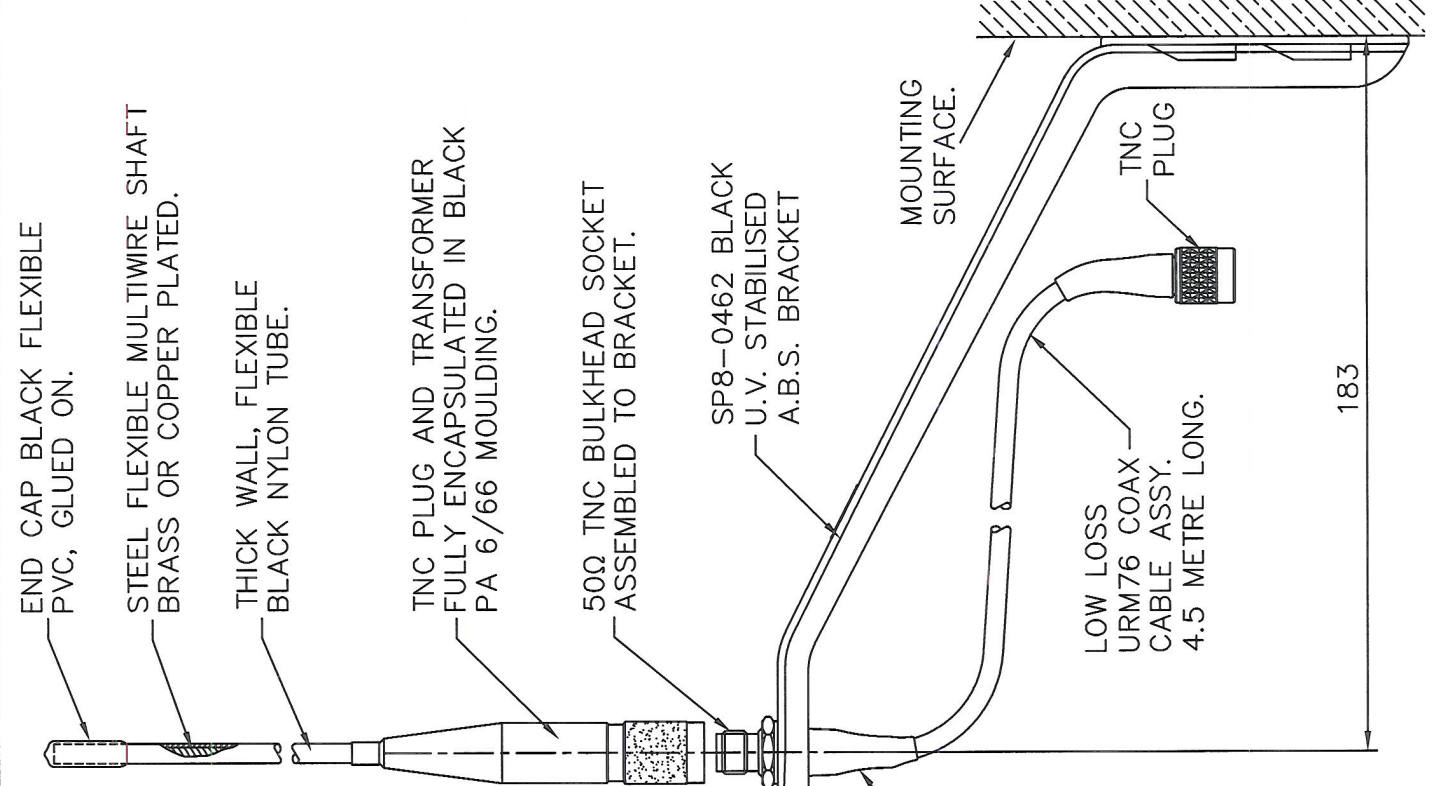
DO NOT SCALE	PROJECTION	ISSUE	DATE	APPROVAL
01019	4	08.06.17	<b>KD</b>	
01019	3	25.08.15	K.D.	
01019	2	07.01.14	K.D.	
1600	1	28.07.99	K.D.	

$\triangle$  — DENOTES LATEST ISSUE CHANGES

**PANORAMA ANTENNAS**

THIS DOCUMENT MUST NOT BE COPIED OR DISCLOSED TO A THIRD PARTY WITHOUT THE WRITTEN CONSENT OF PANORAMA ANTENNAS LTD.

© 2017 **A4**



PART NO.	FREQUENCY RANGE IN MHZ	LENGTH 'L' IN mm	SLEEVE LETTER
BM390	380-400	420	D
BM420	410-430	355	F

$\triangle$  4

WHITE IDENTITY SLEEVE WITH A LETTER (REFER TO TABLE) PRINTED IN BLACK.

ANTENNA ELEMENT

NOTE :-

COAX CABLE AND SP8-0462 BRACKET TO BE SUPPLIED PRE-ASSEMBLED.

FLEXIBLE STRAIN RELIEF/SEALING GLAND, BLACK IN 2 POSNS.

