

YG-TET-14

Die YG-TET-14 ist eine YAGI Richtantenne, bestehend aus einem gespeistem Dipol mit einem Reflektor und 8 Direktoren. (10 Elemente)

Die Antenne ist für Systeme im Frequenzbereich von 380-440MHz geeignet.

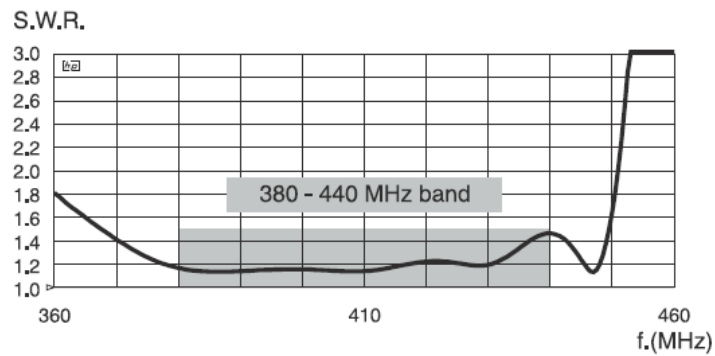
z.B.: 70cm-Band / TETRA / CDMA-450, LTE-450, 433MHz (Sigfox,Lora, u.Ä.)



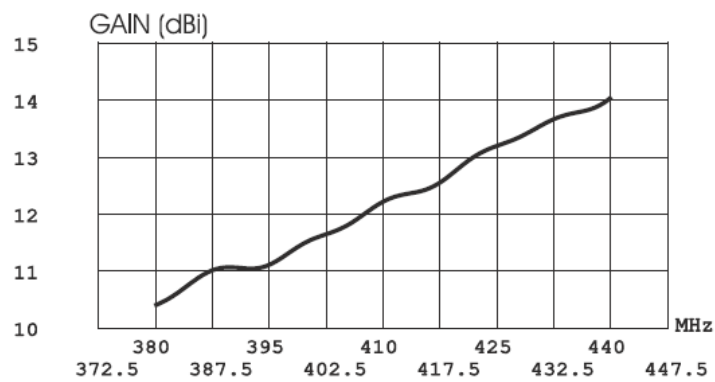
Electrical Data	YG-TET-14
Type	10 elements Yagi
Frequency Range @SWR <1.5	380-440MHz
Impedance	50 OHM
Radiation (H-plane)	50°
Radiation (E-plane)	45°
Front to back ratio	>18 dB
Polarisation	Linear
Gain	11.85 dBd - 14dBi
MAX Power	150 Watts
Grounding Protection	All metal parts are DC-grounded
Connector	N Jack (female) Connector

Mechanical Data	YG-TET-14
Material	Eloxiertes Aluminium (6063-T5) EPDM-Gummi verchromtes Messing
Windlast bei 150km/h	150 N
Luftwiderstand	120km/h
Windoberfläche	0.121 m²
Maße	2125x400mm
Biegeradius	1990mm
Gewicht	2120g
Betriebstemperatur	-40°C bis +60°C
Mastmontage	Durchmesser 35-52mm

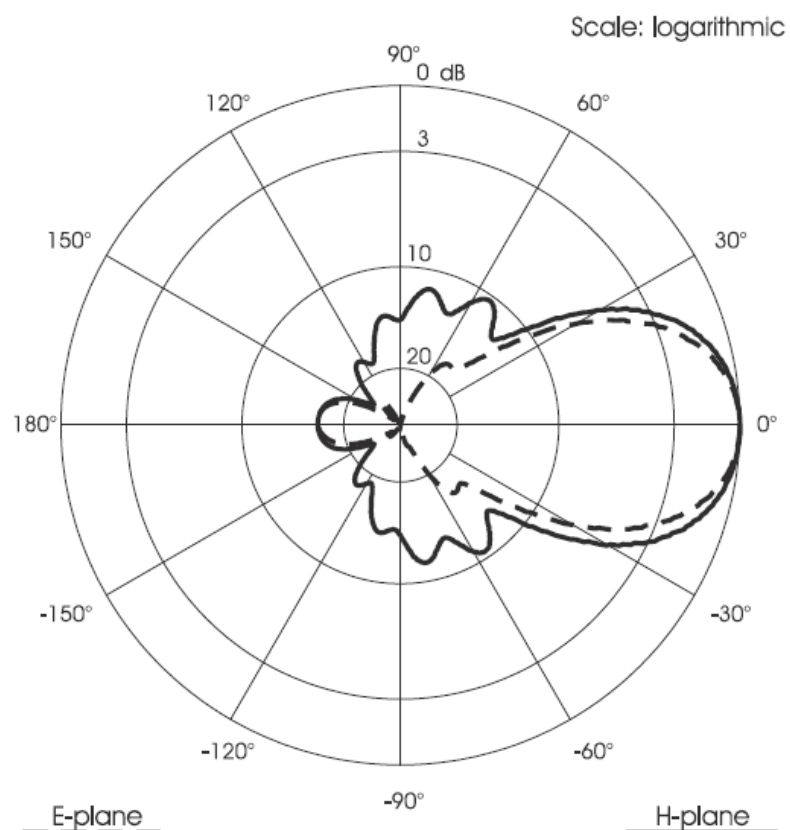
TYPICAL S.W.R. RESPONSE

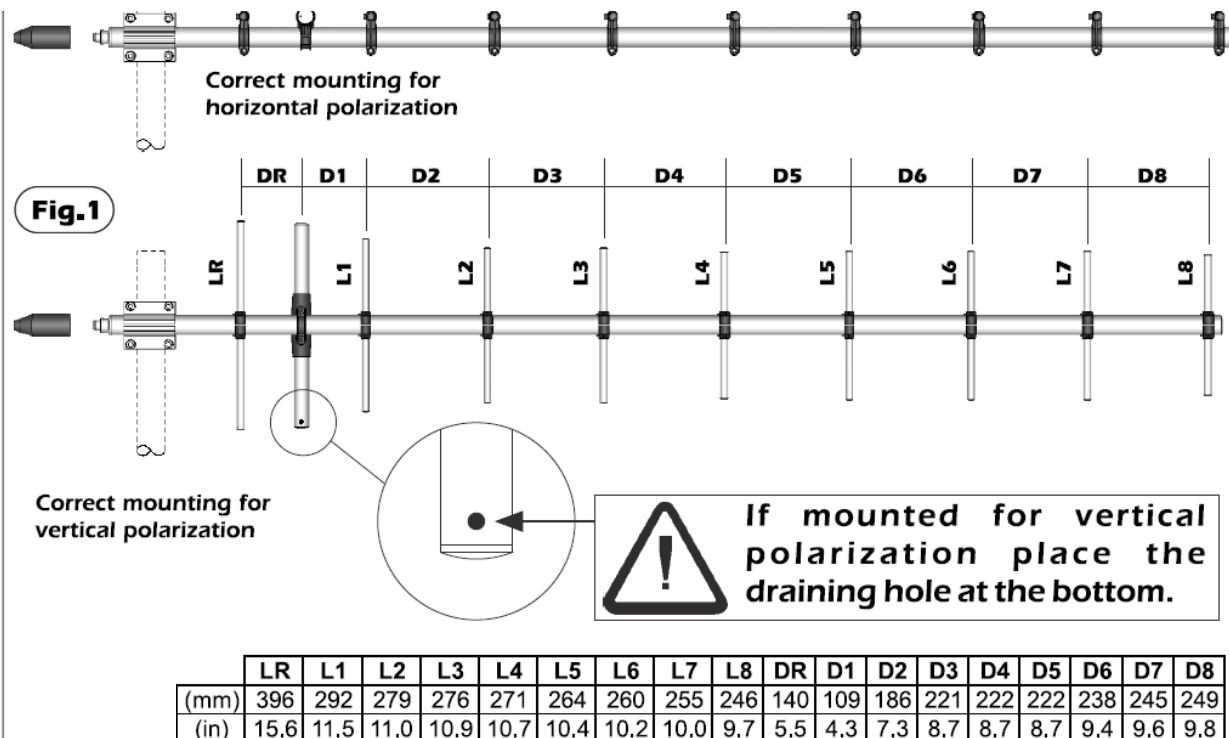


TYPICAL GAIN DIAGRAM vs FREQUENCY

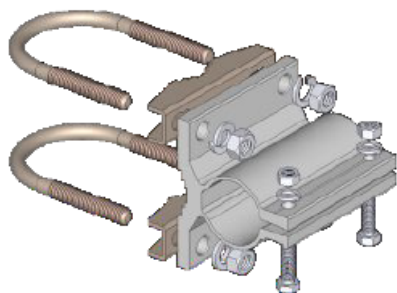


TYPICAL RADIATION PATTERN at mid-band





Standard Mounting Bracket

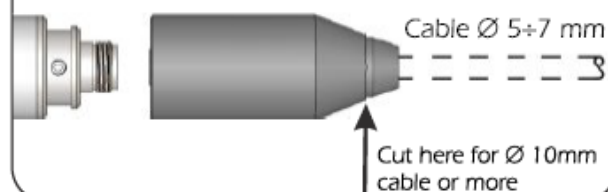


Materials: extruded aluminum
Hardware: stainless & zinc plated steel
Dimensions : 80 x 76 x 65 mm
Weight: 460 gr

Part list

Q.ty	Description
1	Extruded aluminium bracket
2	Steel bracket
2	M8x200 U-bolt
4	M8 Grower washer
4	M8 Hexagonal nut
2	M6x20 Hexagonal head screw
2	M6 Grower washer
2	M6 Hexagonal nut

Connector protection cap



WY400-10N: L=350mm; 13.8in. S=500mm; 19.7in

