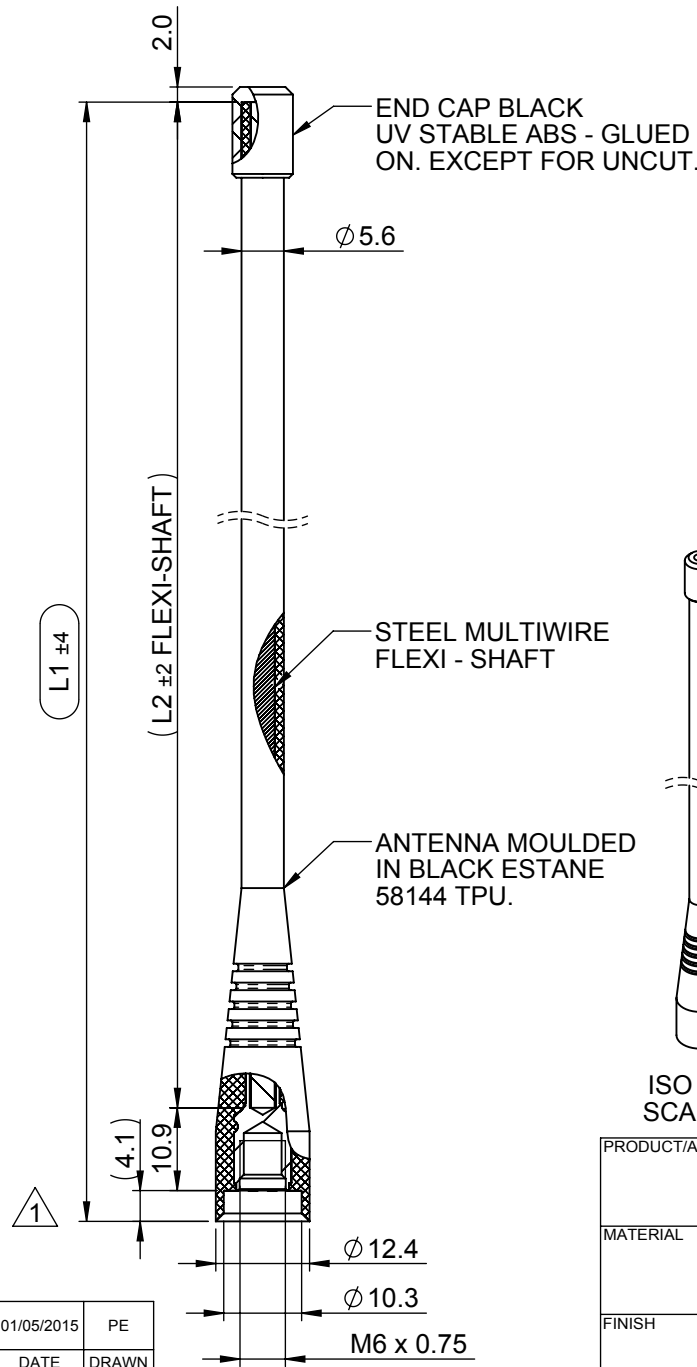


	3RD ANGLE PROJECTION		DO NOT SCALE
	DENOTES LATEST ISSUE CHANGES		DENOTES CRITICAL VALUE
TOLERANCES UNLESS OTHERWISE STATED			
0 DEC. PLACE	±0.5	2 DEC. PLACES	±0.1
1 DEC. PLACE	±0.2	ANGULAR	±1°

© 2015 A4 THIS DOCUMENT MUST NOT BE COPIED OR DISCLOSED TO A THIRD PARTY WITHOUT THE WRITTEN CONSENT OF PANORAMA ANTENNAS LTD.

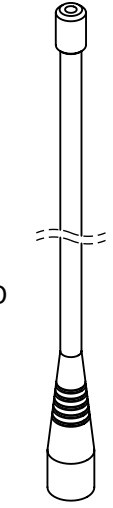
DRG. No. AFM-VAR

A
B
C
D



- NOTES:
- SAMPLES MUST BE APPROVED BY PANORAMA ANTENNAS Q.C. BEFORE COMMENCING PRODUCTION.
 - ALL PARTS MUST BE RoHS COMPLIANT AND MUST NOT CONTAIN ANY SUBSTANCES OF VERY HIGH CONCERN (SVHCs) LISTED UNDER REACH OR POLY-AROMATIC HYDROCARBONS (PAHs), OR PERSISTENT ORGANIC POLLUTANTS (POPs) CONTROLLED BY THE STOCKHOLM CONVENTION.

PART No.	FREQ. RANGE (MHz)	LENGTH "L1" (mm)	LENGTH "L2" (mm)	WEIGHT (g)
AFM	UNCUT	197	182	10.56
AFM-R	330-366	187	172	10.25
AFM-S	350-392	178	163	10.07
AFM-S1	380-400	162	147	9.60
AFM-S2	410-430	152	136	9.32
AFM-T	390-432	154	139	9.38
AFM-T2	420-456	147	132	9.19
AFM-TET	380-430	158	143	9.49
AFM-U	430-472	139	124	8.97
AFM-W	470-512	124	109	8.55
AFM-UT	406-472	144	129	9.10
AFM-R2	350-370	183	168	10.17
AFM-S4	450-470	134	119	8.83
AFM-835	762-870	82	67	7.37
AFM-U1	410-470	144	129	9.10
AFM-U2	450-512	127	112	8.64



ISO VIEW SCALE 1:2

PRODUCT/ASSEMBLY WHIPS		DESCRIPTION ANTENNA MOULDED FLEXI - VARIOUS			
MATERIAL N/A		APPROVED KD	DO.CHECK AR	SCALE 1:1	DIMENSIONS IN mm
FINISH N/A					
WEIGHT	SEE TABLE				

01019	1	PRODUCTION ISSUE. POSITION OF L1 DIMENSIONS UPDATED	01/05/2015	PE
PCN	REV.	DESCRIPTION OF CHANGE	DATE	DRAWN
REVISIONS				