

YG-TET-6

Die YG-TET-6 ist eine YAGI Richtantenne, bestehend aus einem gespeistem Dipol mit einem Reflektor und einem Direktor. (3 Elemente)

Die Antenne ist für Systeme im Frequenzbereich von 380-440MHz geeignet.

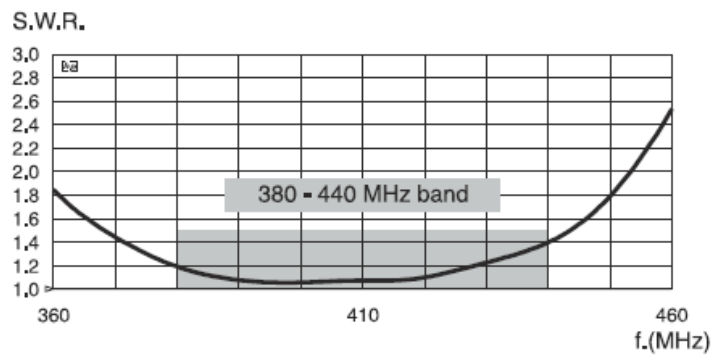
z.B.: 70cm-Band / TETRA / CDMA-450, LTE-450, 433MHz (Sigfox,Lora, u.Ä.)



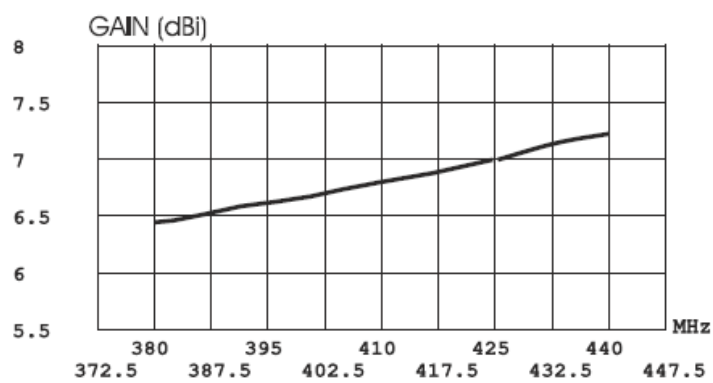
Electrical Data	YG-TET-14
Type	3 elements Yagi
Frequency Range	380-440MHz
Impedance	50 OHM
Radiation (H-plane)	125°
Radiation (E-plane)	65°
Front to back ratio	>17 dB
Polarisation	Linear, Vertikal, Horizontal
Gain	4.85 dBd - 7dBi
MAX Power	150 Watts
Grounding Protection	All metal parts are DC-grounded
Connector	N Jack (female) Connector

Mechanical Data	YG-TET-14
Material	Eloxiertes Aluminium (6063-T5) EPDM-Gummi verchromtes Messing
Windlast bei 150km/h	65 N
Luftwiderstand	180km/h
Windoberfläche	0.048 m²
Maße	565x400mm
Biegeradius	460mm
Gewicht	1130g
Betriebstemperatur	-40°C bis +60°C
Mastmontage	Durchmesser 35-52mm

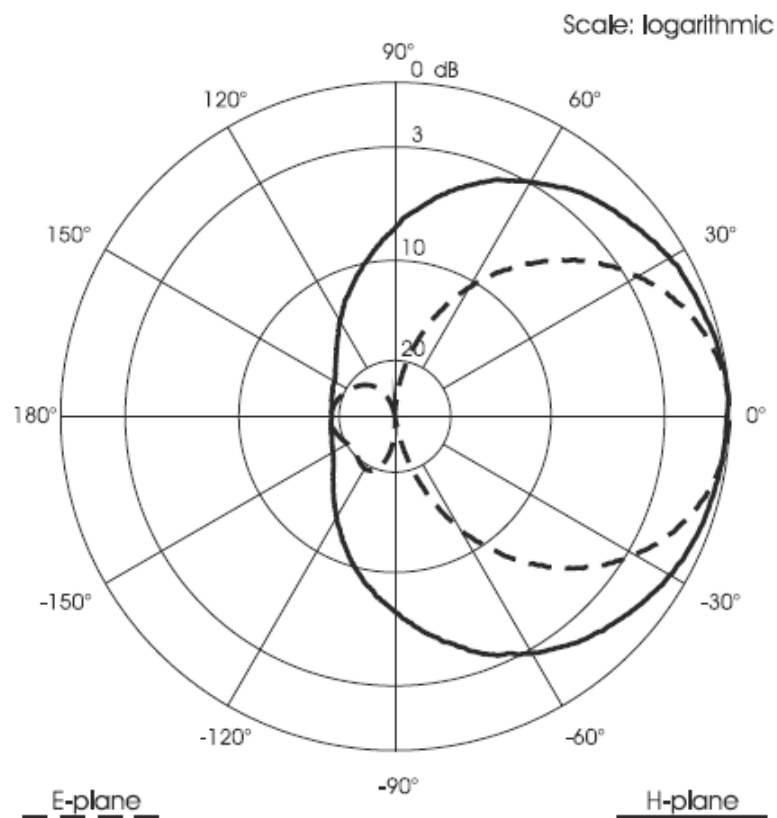
TYPICAL S.W.R. RESPONSE



TYPICAL GAIN DIAGRAM vs FREQUENCY



TYPICAL RADIATION PATTERN at mid-band



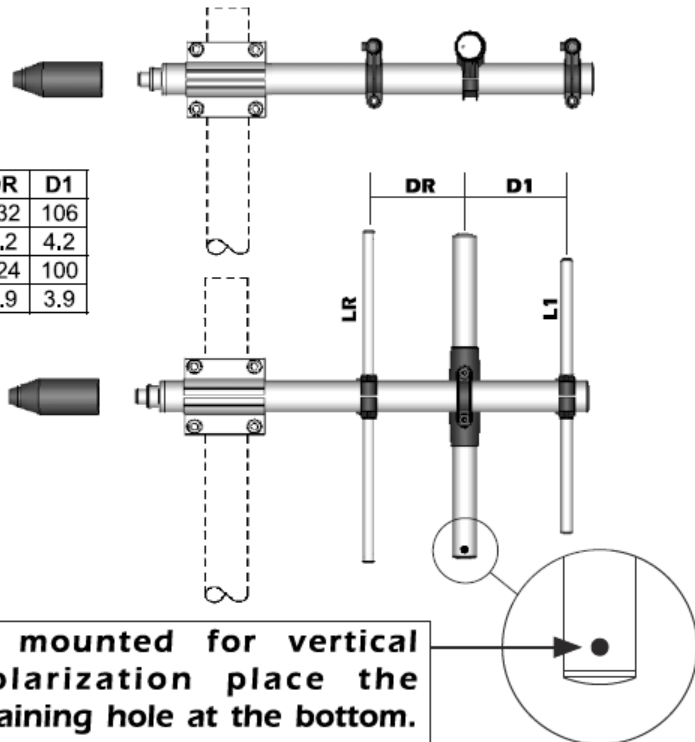
Correct mounting for horizontal polarization

		LR	L1	DR	D1
	(mm)	396	276	132	106
	(in)	15.6	10.9	5.2	4.2
	(mm)	371	260	124	100
	(in)	14.6	10.2	4.9	3.9

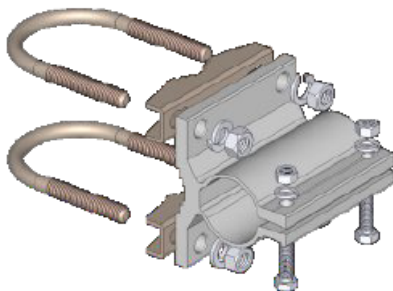
Correct mounting for vertical polarization



If mounted for vertical polarization place the draining hole at the bottom.



Standard Mounting Bracket

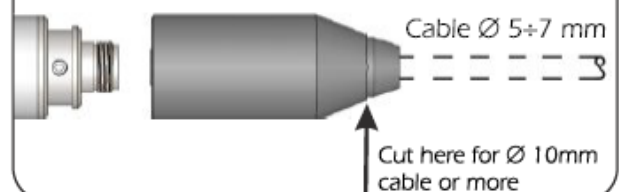


Materials: extruded aluminum
Hardware: stainless & zinc plated steel
Dimensions : 80 x 76 x 65 mm
Weight: 460 gr

Part list

Q.ty	Description
1	Extruded aluminium bracket
2	Steel bracket
2	M8x200 U-bolt
4	M8 Grower washer
4	M8 Hexagonal nut
2	M6x20 Hexagonal head screw
2	M6 Grower washer
2	M6 Hexagonal nut

Connector protection cap



WY400-10V: L=350mm; 13.8in. S=500mm; 19.7in

