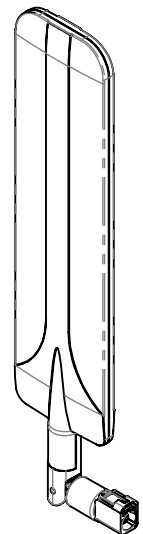
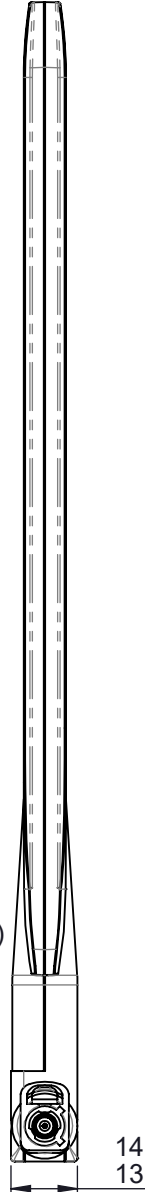
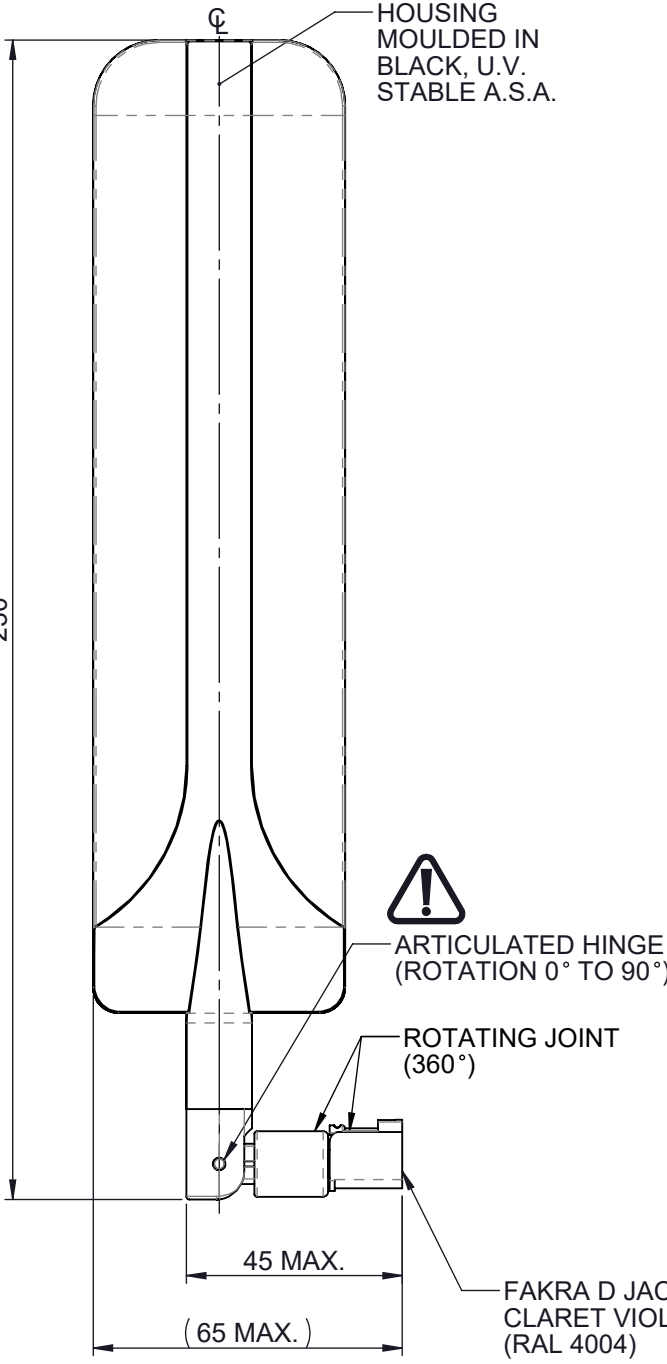
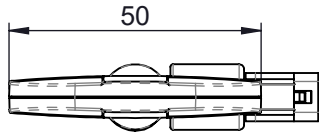


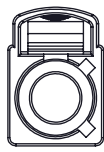
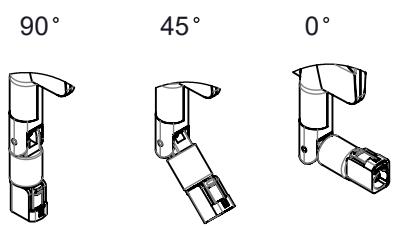
TOLERANCES UNLESS OTHERWISE STATED			
0 DEC. PLACE	±0.5	2 DEC. PLACES	±0.1
1 DEC. PLACE	±0.2	ANGULAR	±1°

A
B
C
D
E



ISO VIEW
SCALE 1:3

ARTICULATED HINGE - SET/FIXED POSITIONS



**FAKRA D
STANDARD INTERFACE**

NOTES:

1. SAMPLES MUST BE APPROVED BY PANORAMA ANTENNAS Q.C. BEFORE COMMENCING PRODUCTION.
2. ALL MATERIALS SUPPLIED MUST BE RoHS3 (DIRECTIVE (EU) 2015/863) COMPLIANT AND MUST NOT CONTAIN ANY SUBSTANCES OF VERY HIGH CONCERN (SVHCs) LISTED UNDER REACH OR POLY-AROMATIC HYDROCARBONS (PAHs), OR PERSISTENT ORGANIC POLLUTANTS (POPs) CONTROLLED BY THE STOCKHOLM CONVENTION.

F					PRODUCT/ASSEMBLY 1017 - TERMINAL ANTENNAS	DESCRIPTION PADDLE ANT 615-6000MHz R/A FAKRA D JACK				
					MATERIAL N/A					
	01019	A	INITIAL ISSUE	02/10/2020	PE	FINISH N/A	APPROVED KD	D.O.CHECK AA	SCALE 1:1.5	DIMENSIONS IN mm
	01019	1	PRODUCTION ISSUE	29/01/2021	PE					
PCN	REV.	DESCRIPTION	DATE	DRN	WEIGHT 54(NET)g	PANORAMA ANTENNAS				