



CDU

UHF Clip Antenna

Fast installation

Moulded in coaxial cable

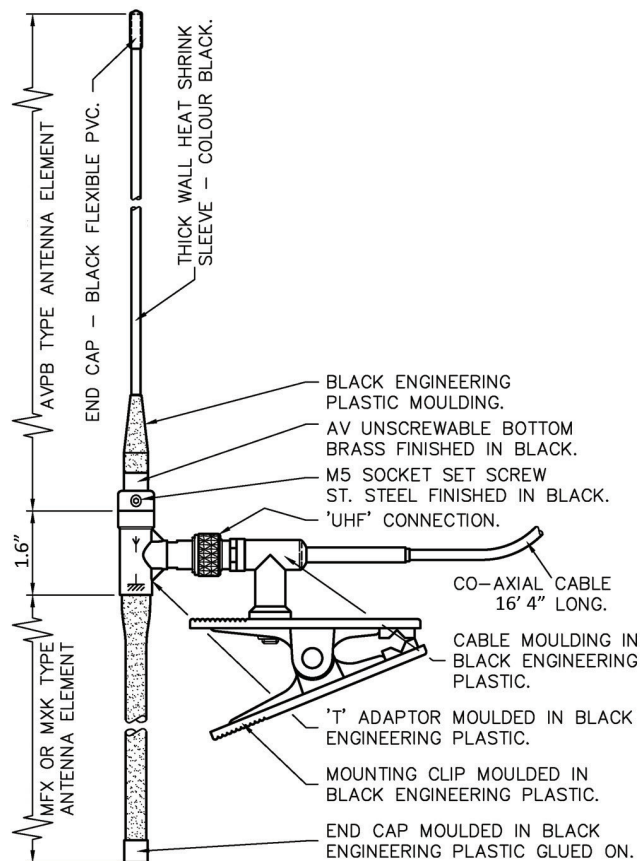
The performance and scope of radio equipment can often be considerably improved by moving the antenna to a better location. Spring clip antennas provide an easy way to do this.

The jaws of the spring clip are moulded in nylon and are fully adjustable for any angle. The antenna features a fully moulded coaxial connector for weather protection and resilience.

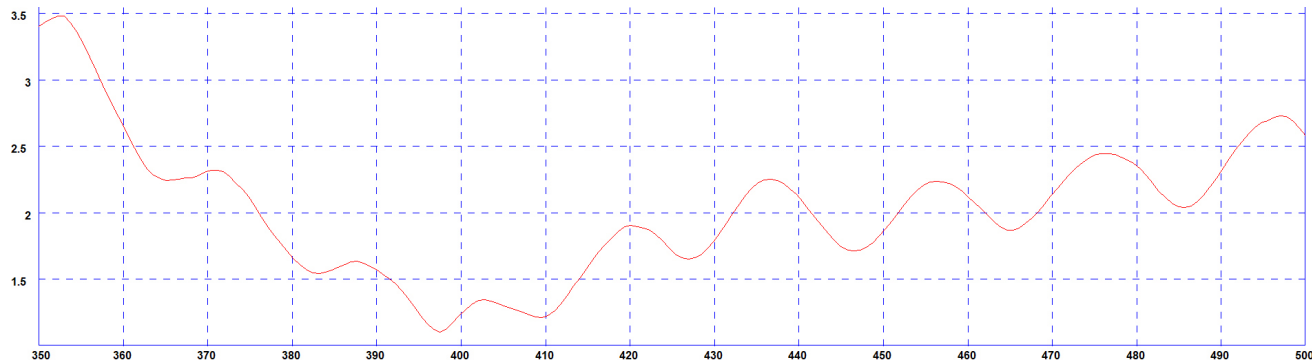
The fitted coaxial cable is flexible and low loss providing a complete kit for temporary installation.

Technical Drawing

Temporary Clip Dipole Antenna

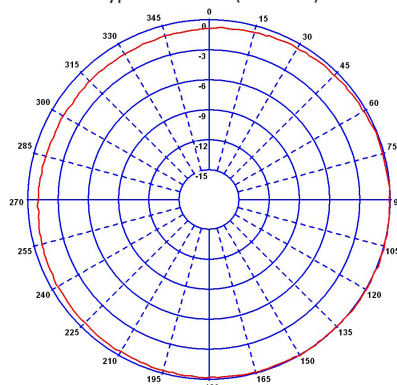


Typical VSWR*



* VSWR shown mounted in free space (with 5m (16') of CS23 cable)
For CDU-TET

Typical H-Plane (400MHz)



Product Data

Part No.	CDU-S1	CDU-S2	CDU-TET	CDU-U	CDU-UT	CDU-W	
Electrical Data							
Frequency Range (MHz)	380-400	410-430	380-430	430-472	406-472	470-512	
Operational Band	S1	S2	TET	U	UT	W	
Peak Gain: Isotropic +	2dBi	2dBi	2dBi	2dBi	2dBi	2dBi	
Compared to ¼ wave	0dB	0dB	0dB	0dB	0dB	0dB	
Typical VSWR	< 2:1	< 2:1	< 2:1	< 2:1	< 2:1	< 2:1	
Polarisation	Vertical	Vertical	Vertical	Vertical	Vertical	Vertical	
Pattern	Omn-directional	Omn-directional	Omn-directional	Omn-directional	Omn-directional	Omn-directional	
Impedance	50Ω	50Ω	50Ω	50Ω	50Ω	50Ω	
Max Input Power (W)	50	50	50	50	50	50	
Mechanical Data							
Dimensions (mm)	Total Length	233 (9.2")	215 (8.5")	224 (8.9")	194 (7.7")	205 (8.1")	179 (7.1")
	'L1' length	158 (6.2")	150 (3.3")	154 (2.9")	134 (1.8")	138 (1.6")	124 (1.6")
	'L2' length	75 (2.9")	65 (6.9")	70 (6.2")	60 (6.3")	67 (6.1")	55 (5.7")
Operating Temp (°C)	-40° / +80°C (-40° / +176°F)	-40° / +80°C (-40° / +176°F)	-40° / +80°C (-40° / +176°F)	-40° / +80°C (-40° / +176°F)	-40° / +80°C (-40° / +176°F)	-40° / +80°C (-40° / +176°F)	
Colour	Black	Black	Black	Black	Black	Black	
Cable Data							
Cable Type	CS23 (RG58 c/u)	CS23 (RG58 c/u)	CS23 (RG58 c/u)	CS23 (RG58 c/u)	CS23 (RG58 c/u)	CS23 (RG58 c/u)	
Length (m)	5 (16.4")	5 (16.4")	5 (16.4")	5 (16.4")	5 (16.4")	5 (16.4")	

+ Peak Gain Measured without cable loss