

1

2

3

4

5



PART No.	CABLE LENGTH (m)	WEIGHT (g)
LPB-6-60-1SP	1	195
LPB-6-60-2SP	2	225
LPB-6-60-5SP	5	320

PRODUCT/ASSEMBLY  
**1004 - ELEVATED & FIXED SITE ANTENNAS**

DESCRIPTION  
**LO PRO ANT 617-960/1710-6000MHz SMA(m) - VARIOUS CABLE LENGTHS**

MATERIAL  
N/A

FINISH  
N/A

WEIGHT  
SEE TABLE (NET) g

APPROVED PE DO.CHECK IC

SCALE 1:5 DIMENSIONS IN mm

DO NOT SCALE 3RD ANGLE PROJECTION


01019	A	INITIAL ISSUE	05/09/2019	AA
-------	---	---------------	------------	----

01019	1	RENAMED TO VAR. 2m & 5m VARIANTS ADDED.	31/01/2020	PE
-------	---	---	------------	----

01019	2	WEIGHT UPDATED	21/10/2020	AA
-------	---	----------------	------------	----

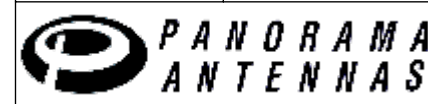
PCN REV. DESCRIPTION DATE DRN

TOLERANCES UNLESS OTHERWISE STATED

0 DEC. PLACE ±0.5 2 DEC. PLACES ±0.1

1 DEC. PLACE ±0.2 ANGULAR ±1°

△ DENOTES LATEST ISSUE CHANGES ○ DENOTES CRITICAL VALUE



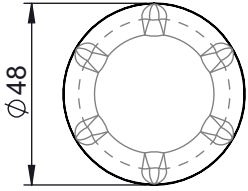
THIS DOCUMENT MUST NOT BE COPIED OR DISCLOSED TO A THIRD PARTY WITHOUT THE WRITTEN CONSENT OF PANORAMA ANTENNAS LTD.

A

B

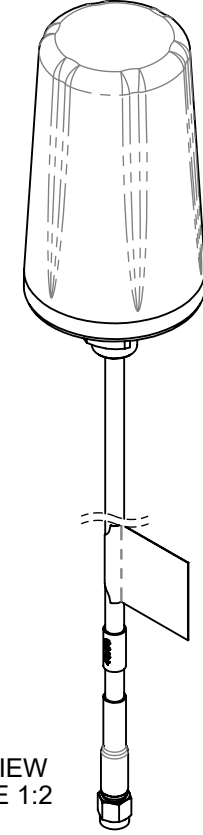
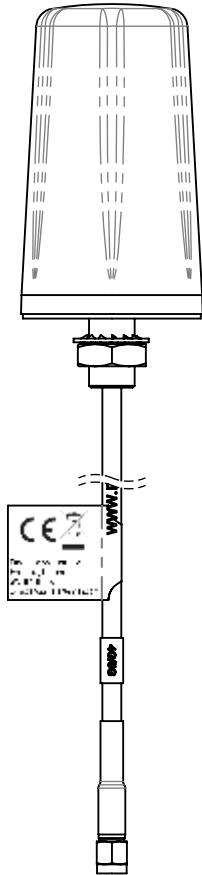
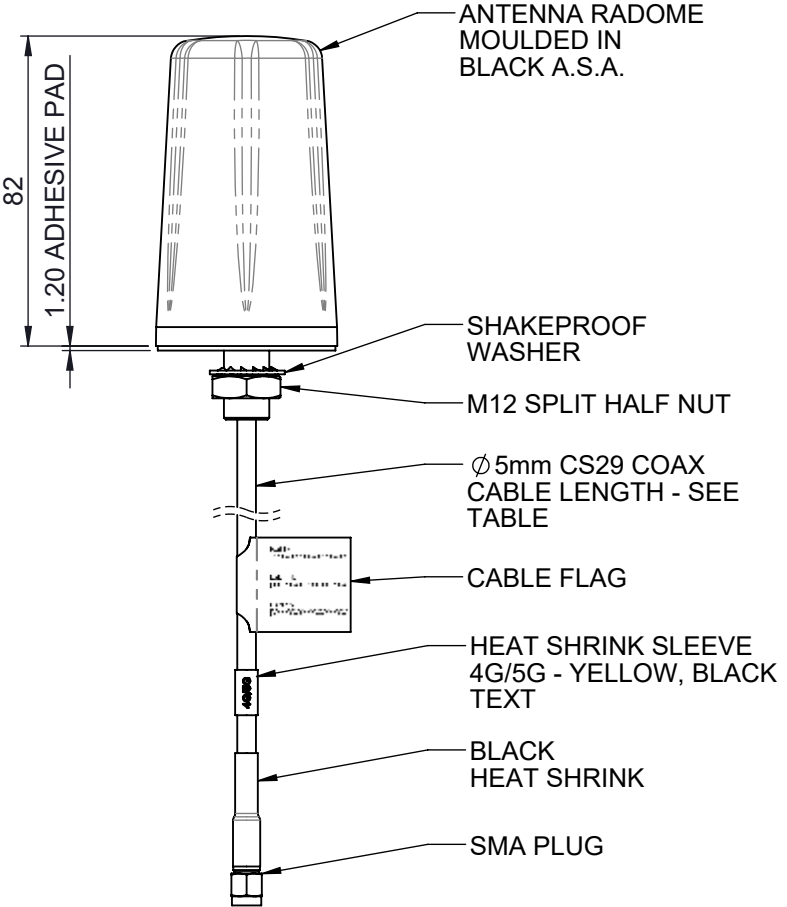
C

D



- NOTES:
- SAMPLES MUST BE APPROVED BY PANORAMA ANTENNAS Q.C. BEFORE COMMENCING PRODUCTION.
  - ALL MATERIALS SUPPLIED MUST BE RoHS3 (DIRECTIVE (EU) 2015/863) COMPLIANT AND MUST NOT CONTAIN ANY SUBSTANCES OF VERY HIGH CONCERN (SVHCs) LISTED UNDER REACH OR POLY-AROMATIC HYDROCARBONS (PAHs), OR PERSISTENT ORGANIC POLLUTANTS (POPs) CONTROLLED BY THE STOCKHOLM CONVENTION.

FREQUENCIES:  
617 - 960 MHz  
1710 - 6000 MHz



ISO VIEW  
SCALE 1:2