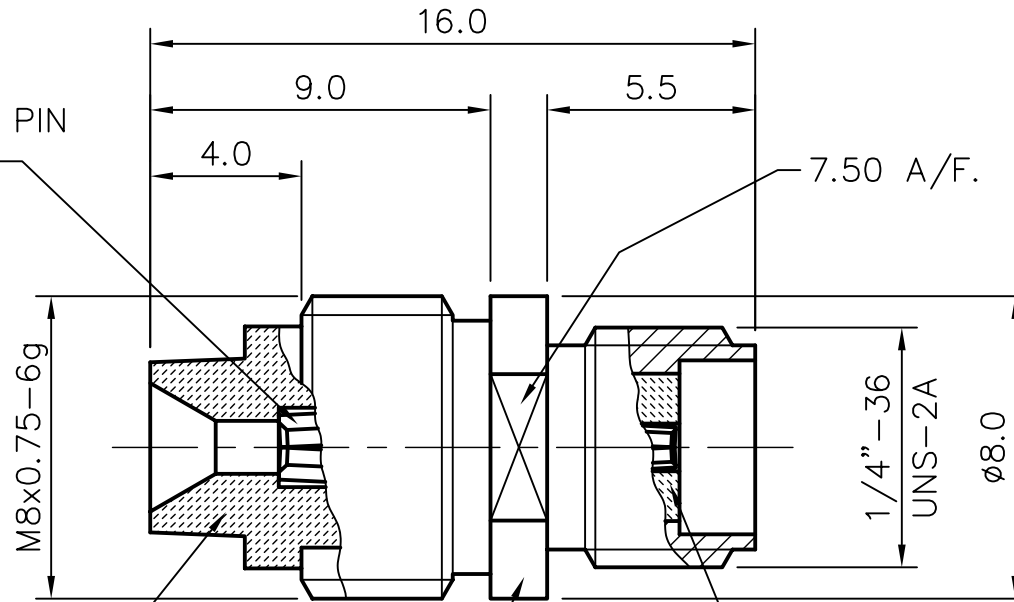


INTEGRAL CONTACT PIN
FME (f) TO SMA(f)
GOLD PLATED



FME INSULATOR
WHITE P.T.F.E.

ADAPTOR BODY
NICKEL PLATED
BRASS

SMA INSULATOR
WHITE P.T.F.E.

NOTE: -

IMPEDANCE - 50Ω

DRG. No.		CA-SF-FJ	
TITLE			
SMA (f) - FME (f) ADAPTOR			
MATERIAL			
FINISH			
DRAWN	A.G.	DO.CHECK	K.D.
SCALE	5:1	DIMENSIONS IN mm	
FILE CA-SF-FJ			
TOLERANCES UNLESS OTHERWISE STATED			
0 DEC. PLACE ± 0.5		2 DEC. PLACES ± 0.1	
1 DEC. PLACE ± 0.2		ANGULAR $\pm 1'$	
DO NOT SCALE	PROJECTION		
C/NOTE	ISSUE	DATE	APPROVAL
01019	1	2.12.04	K.D.
- DENOTES LATEST ISSUE CHANGES			
THIS DOCUMENT MUST NOT BE COPIED OR DISCLOSED TO A THIRD PARTY WITHOUT THE WRITTEN CONSENT OF PANORAMA ANTENNAS LTD.			
© 2004			A4