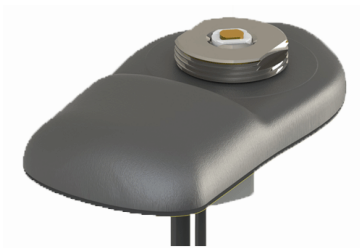


GPS/UHF Combination Panel Mount

GPSNMO-TETG

19/11/2014 vA



- Works without a ground plane
- Active GPS element
- Single hole fixing

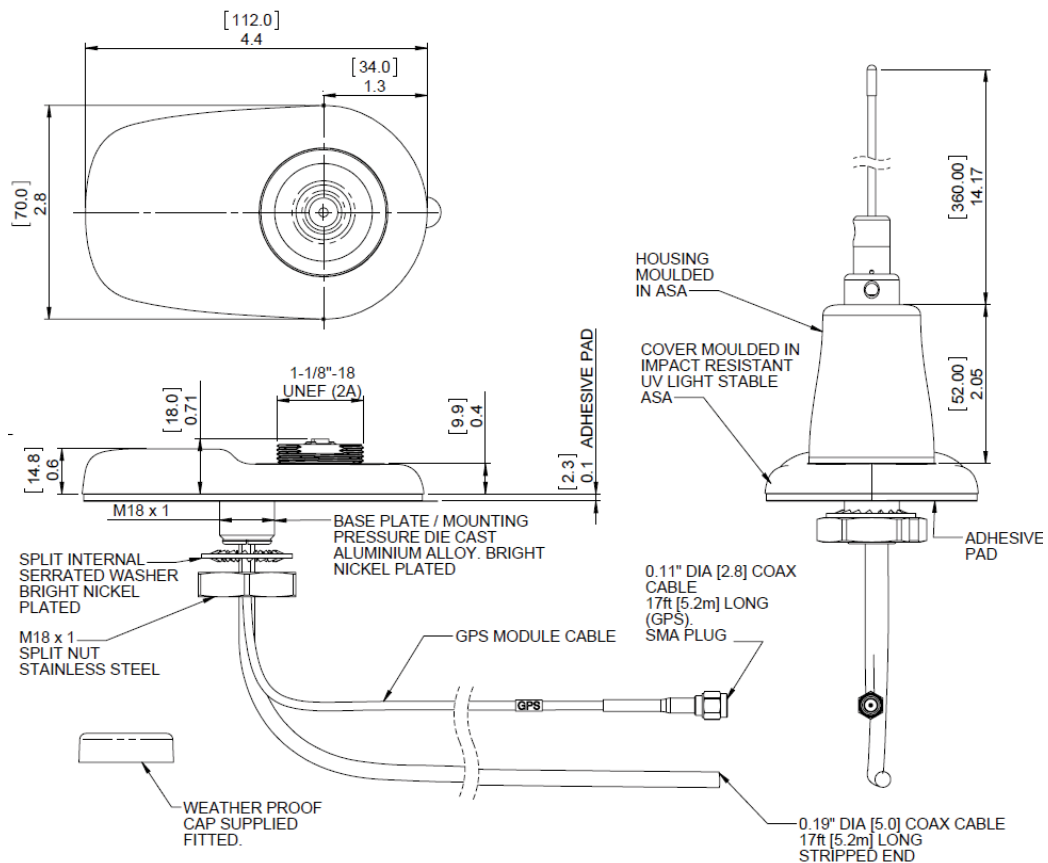
The GPSNMO-TETG antenna range is a dual function antenna with an active GPS element.

The GPSNMO-TETG combines the GPSNMO GPS base with a 1/2 wave UHF antenna offering performance on or off a ground plane across 380-430MHz and a peak gain of 4dBi.

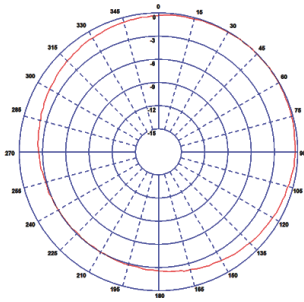
The dual functionality of the Panorama GPSNMO range makes the antenna a popular choice for police, buses, taxi's and other public service and utility vehicles.

This antenna can be provided as a 'plug & play' kit for all UHF terminals.

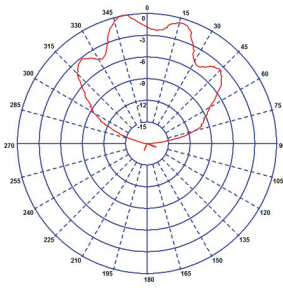
Technical Drawing



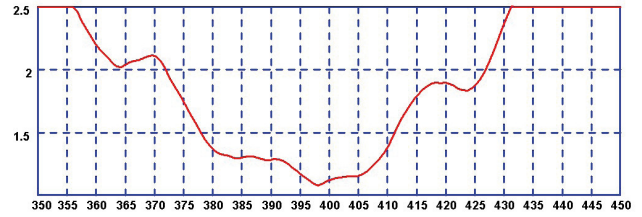
Typical H-Plane (400MHz)



Typical E-Plane (GPS)



Typical VSWR



*measured with 5m CS23 Cable

Part No.		GPSNMO-TETG
Electrical Data		
Frequency Range (MHz)		380-430
Operational Band		TET
Peak Gain: Isotropic		4dBi
Polarisation		Vertical
Pattern		Omni-directional
Impedance		50Ω
Max Input Power (W)		60
GPS Data		
Frequency Range (MHz)		1575
VSWR		<2.0:1 ± 4MHz
Gain: LNA		26dB
Polarisation		Right Hand Circular
Operating Voltage		3 - 5V DC (fed via coax)
Current		Typical 15mA
Mechanical Data		
Dimensions (mm)	Whip Length	410(16")
	Base Height	14.8 (.6")
	Base Length	112(4.4")
	Base Width	70 (2.8")
Operating Temp (°C)		-40° / +80°C (-40° / 176°F)
Material		ASA
Colour		Black
Mounting Data		
Fixing		Panel mount
Hole Size (mm)		18 (3/4")
Cable Data		
GPS Cable	Type	RG174
	Thickness (mm)	2.8 (.1")
	Length (m)	5(17")
	Termination	SMA Plug
Comms Cable	Type	RG174
	Thickness (mm)	2.8 (.1")
	Length (m)	5(17")
	Termination	None